

TRAILER ACCESSORIES

- 48 Standard Trailer Plugs & Sockets
- 49 Trailer Plugs & Sockets, L.E.D
- 50 Trailer Plugs & Sockets, Metal
- 52 Trailer Plugs & Sockets, Metal with L.E.D
- 52 Trailer Plugs & Sockets, Metal, 12 Pin
- 52 Trailer Plugs & Sockets, Clear
- 53 Trailer Plugs & Sockets, Brackets
- 54 Trailer Plugs & Sockets, 9 Pin
- 55 Trailer Plugs & Sockets, 2 Pin
- 56 Trailer Sockets, Pre-Wired
- 57 Trailer Sockets, Pre-Wired, L.E.D
- 58 Adaptors
- 59 Adaptors, L.E.D
- 60 Car Coil Adaptors, L.E.D
- 62 Suzi Coils
- 63 5M Trailer Socket Circuit Testers
- 63 Trailer Light Circuit Testers
- 64 Click 'N' Tow Wiring Harnesses
- 66 Reflectors
- 67 Tow Balls & Accessories
- 68 Trailer Plug & Sockets - Diagrams

TRAILER PLUGS AND SOCKETS - Standard



**Model No. KT741 (Retail Blister)
KT741-20 (Bulk)**
7 Pin Small Round Trailer Plug

- 7 pins rated to 15A at 12V
- Revolutionary 3 Step wiring body
- Threaded screw cap



**Model No. KT742 (Retail Blister)
KT742-20 (Bulk)**
7 Pin Small Round Trailer Socket

- 7 pins rated to 15A at 12V
- Revolutionary 3 Step wiring body
- Threaded screw cap



**Model No. KT743 (Retail Blister)
KT743-20 (Bulk)**
7 Pin Flat Trailer Socket

- 7 pins rated to 15A at 12V
- Threaded screw cap



**Model No. KT744 (Retail Blister)
KT744-20 (Bulk)**
7 Pin Flat Trailer Plug

- 7 pins rated to 15A at 12V
- Threaded screw cap



**Model No. KT745 (Retail Blister)
KT745-20 (Bulk)**
7 Pin Large Round Trailer Plug

- 7 pins rated to 30A at 12V
- Revolutionary 3 Step wiring body
- Threaded screw cap



**Model No. KT746 (Retail Blister)
KT746-20 (Bulk)**
7 Pin Large Round Trailer Socket

- 7 pins rated to 30A at 12V



**Model No. KT747 (Retail Blister)
KT747-20 (Bulk)**
7 Pin Large Round Coupling Socket

- 7 pins rated to 30A at 12V
- Rubber boot cap

TRAILER PLUGS AND SOCKETS - L.E.D

Unique to the KT range, these plugs and sockets feature a built-in circuit tester delivering an easy way to ensure each pin is wired and functioning correctly. To operate, simply press the switch on the housing of the plug or socket while connected to the vehicle and apply park, brake and indicators. Each LED should illuminate to indicate a successful power connection.



Model No. KT701 (Retail Blister) 7 Pin Small Round Trailer Plug - LED

- Inbuilt LED circuit tester
- 7 pins rated to 15A at 12V
- Revolutionary 3 step wiring body
- Threaded screw cap



Model No. KT702 (Retail Blister) 7 Pin Small Round Trailer Socket - LED

- Inbuilt LED circuit tester
- 7 pins rated to 15A at 12V
- Revolutionary 3 step wiring body
- Threaded screw cap



Model No. KT703 (Retail Blister) 7 Pin Flat Trailer Socket - LED

- Inbuilt LED circuit tester
- 7 pins rated to 15A at 12V
- Threaded screw cap



Model No. KT704 (Retail Blister) 7 Pin Flat Trailer Plug - LED

- Inbuilt LED circuit tester
- 7 pins rated to 15A at 12V
- Threaded screw cap



Model No. KT705 (Retail Blister) 7 Pin Large Round Trailer Plug - LED

- Inbuilt LED circuit tester
- 7 pins rated to 30A at 12V
- Revolutionary 3 step wiring body
- Threaded screw cap

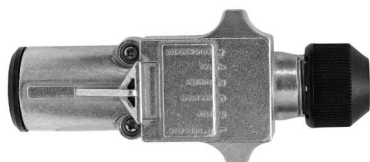


Model No. KT706 (Retail Blister) 7 Pin Large Round Trailer Socket - LED

- Inbuilt LED circuit tester
- 7 pins rated to 30A at 12V



TRAILER PLUGS AND SOCKETS - Metal



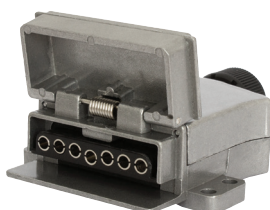
Model No. KT741M (Retail Blister)
7 Pin Small Round Trailer Plug - Metal

- Circuits molded into housing
- Stainless steel Phillips Head screws
- 7 pins rated to 15A at 12V
- Revolutionary 3 step wiring body
- Threaded screw cap



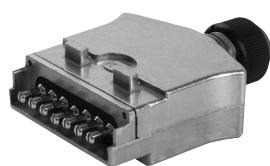
Model No. KT742M (Retail Blister)
7 Pin Small Round Trailer Socket - Metal

- Circuits molded into housing
- Stainless steel Phillips Head screws
- 7 pins rated to 15A at 12V
- Revolutionary 3 step wiring body
- Threaded screw cap



Model No. KT743M (Retail Blister)
7 Pin Flat Trailer Socket - Metal

- Circuits molded into housing
- Stainless steel Phillips Head screws
- 7 pins rated to 15A at 12V
- Threaded screw cap



Model No. KT744M (Retail Blister)
7 Pin Flat Trailer Plug - Metal

- Circuits molded into housing
- Stainless steel Phillips Head screws
- 7 pins rated to 15A at 12V
- Threaded screw cap

TRAILER PLUGS AND SOCKETS - Metal

Model No. KT745M (Retail Blister) 7 Pin Large Round Trailer Plug - Metal

- Circuits molded into housing
- Stainless steel Phillips Head screws
- 7 pins rated to 30A at 12V
- Revolutionary 3 step wiring body
- Threaded screw cap



Model No. KT746M (Retail Blister) 7 Pin Large Round Trailer Socket - Metal

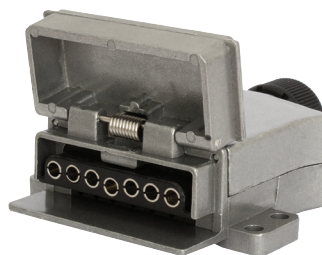
- Circuits molded into housing
- Stainless steel Phillips Head screws
- 7 pins rated to 30A at 12V



TRAILER PLUGS AND SOCKETS - Metal with L.E.D

Model No. KT703M (Retail Blister) 7 Pin Flat Trailer Socket - Metal with L.E.D

- Inbuilt L.E.D circuit tester
- Circuits molded into housing
- Stainless steel Phillips Head screws
- 7 pins rated to 15A at 12V

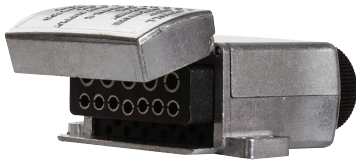


Model No. KT704M (Retail Blister) 7 Pin Flat Trailer Plug - Metal with L.E.D

- Inbuilt L.E.D circuit tester
- Circuits molded into housing
- Stainless steel Phillips Head screws
- 7 pins rated to 15A at 12V



TRAILER PLUGS AND SOCKETS - Metal, 12 Pin



Model No. KT1243 (Retail Blister)
12 Pin Flat Trailer Socket - Metal

- Circuits molded into housing
- Stainless steel Phillips Head screws
- 7 pins rated to 15A at 12V
- 5 pins rated to 35A at 12V



Model No. KT1244 (Retail Blister)
12 Pin Flat Trailer Plug - Metal

- Circuits molded into housing
- Stainless steel Phillips Head screws
- 7 pins rated to 15A at 12V
- 5 pins rated to 35A at 12V

TRAILER PLUGS AND SOCKETS - Clear

Model No. KT741C (Retail Blister)
7 Pin Small Round Trailer Plug - Clear

- Transparent polycarbonate case for easy inspection
- Colour coded screws match cable colour required for specific pins
- Cable gland seals cable entry to protect against moisture and dust
- Internal saddle device provides strain relief and keeps wiring in place
- 7 pins rated to 15A at 12V



Colour coded screws

Model No. KT744C (Retail Blister)
7 Pin Flat Trailer Plug - Clear

- Transparent polycarbonate case for easy inspection
- Colour coded screws match cable colour required for specific pins
- Cable gland seals cable entry to protect against moisture and dust
- Internal saddle device provides strain relief and keeps wiring in place
- 7 pins rated to 15A at 12V



Colour coded screws

Model No. KT745C (Retail Blister)
7 Pin Large Round Trailer Plug - Clear

- Transparent polycarbonate case for easy inspection
- Colour coded screws match cable colour required for specific pins
- Cable gland seals cable entry to protect against moisture and dust
- Internal saddle device provides strain relief and keeps wiring in place
- 7 pins rated to 30A at 12V



Colour coded screws

TRAILER PLUGS AND SOCKETS - Brackets

Model No. KT790 (Retail Blister)
KT790-20 (Bulk)
Flat Metal Bracket to suit Small Round Plastic Sockets



Model No. KT791 (Retail Blister)
KT791-20 (Bulk)
Angled Metal Bracket to suit Small Round Plastic Sockets



Model No. KT792 (Retail Blister)
KT792-20 (Bulk)
Angled Metal Bracket to suit Large Round Plastic Sockets



Model No. KT793 (Retail Blister)
KT793-20 (Bulk)
Metal Cradle to suit Small and Large Round Trailer Plugs



Model No. KT794 (Retail Blister)
KT794-20 (Bulk)
Flat Metal Bracket to suit Small Round Metal Sockets



Model No. KT795 (Retail Blister)
KT795-20 (Bulk)
Angled Metal Bracket to suit Small Round Metal Sockets



TRAILER PLUGS AND SOCKETS - 9 Pin

The unique 9 Pin Trailer Plugs & Sockets feature a built-in 50 Amp Connector with a 7 Pin Trailer Connection. This eliminates the need for extra plugs & sockets by keeping it in a single compact unit.

The 9 Pin Trailer Plug & Socket is perfect for providing power to fridges and other appliances from your vehicle or caravan when requiring a 50 Amp power connection, as well as running power to your trailer lights from your vehicle.

There is no crimping or soldering required with the 9 Pin Trailer Plug or Socket unlike other similar 50 Amp connectors on the market. The 9 Pin Trailer Plug and Socket allow cable to be secured using screws and a Phillips head screw driver. Refer to wiring diagrams on page 69.



Model No. KT943 (Retail Blister)
7 Pin Flat Trailer Socket with 2 Pin 50A Connector

- Durable polycarbonate housing
- Spring loaded dustproof cover
- No crimping or soldering required
- Stainless steel Phillips Head screws
- Silver plated copper pins
- 7 pins rated to 15A at 12V
- 2 Pin 50A connector suits cable up to 8mm² (8B&S)



Model No. KT944 (Retail Blister)
7 Pin Flat Trailer Plug with 2 Pin 50A Connector

- Durable polycarbonate housing
- No crimping or soldering required
- Stainless steel Phillips Head screws
- Silver plated copper pins
- 7 pins rated to 15A at 12V
- 2 Pin 50A connector suits cable up to 8mm² (8B&S)

TRAILER PLUGS AND SOCKETS - 2 Pin

The KT 50 Amp 2 Pin Trailer Plugs & Sockets are the perfect solution for providing power to fridges and other appliances from your vehicle or caravan when requiring a 50 Amp power connection.

The KT 50 Amp 2 Pin Trailer Plugs & Sockets are the first of their kind, serving a similar purpose to the popular 'Anderson Plug' without the need for crimping. Each socket is fitted with a spring loaded dust and splashproof cover to protect internal pins and wiring while the connector is not in use and acts as a latch to secure the connection.

Model No. KT70025 (Retail Blister) 2 Pin 50A Trailer Plug

- 2 Pin, 50A
- Durable polycarbonate housing
- No crimping or soldering required
- Stainless steel Phillips Head screws
- Silver plated copper pins
- Suits cable up to 8mm² (8B&S)



Model No. KT70026 (Retail Blister) 2 Pin 50A Trailer Socket

- 2 Pin, 50A
- Durable polycarbonate housing
- Spring loaded dustproof cover
- No crimping or soldering required
- Stainless steel Phillips Head screws
- Silver plated copper pins
- Suits cable up to 8mm² (8B&S)

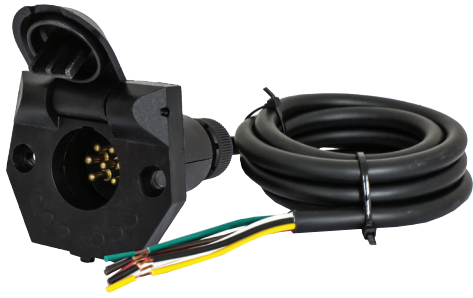


Model No. KT70027 (Retail Blister) 2 Pin 50A Trailer Plug and Socket

- 2 Pin, 50A
- Durable polycarbonate housing
- Spring loaded dustproof cover (Socket only)
- No crimping or soldering required
- Stainless steel Phillips Head screws
- Silver plated copper pins
- Suits cable up to 8mm² (8B&S)



TRAILER SOCKETS - Pre-Wired



Model No. KT742P (Retail Blister)
KT742P-B (Bulk pack of 20)
1.5m Pre-Wired 7 Pin Small Round Trailer Socket

- 7 pins rated to 15A at 12V
- Spring loaded dustproof cover
- Pre-wired with 7 core trailer cable



Model No. KT743P (Retail Blister)
KT743P-B (Bulk pack of 20)
1.5m Pre-Wired 7 Pin Flat Trailer Socket

- 7 pins rated to 15A at 12V
- Spring loaded dustproof cover
- Pre-wired with 7 core trailer cable



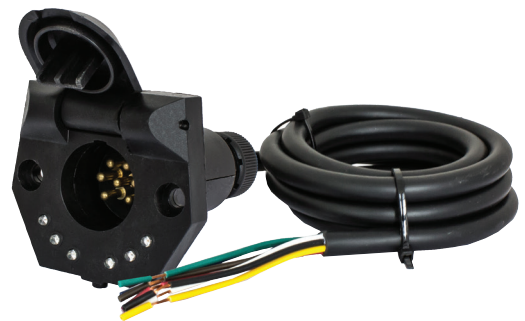
Model No. KT747P (Retail Blister)
KT747P-B (Bulk pack of 20)
1.5m Pre-Wired 7 Pin Large Round Trailer Socket

- 7 pins rated to 30A at 12V
- Spring loaded dustproof cover
- Pre-wired 7 core trailer cable

TRAILER SOCKETS - Pre-Wired with L.E.D

Model No. KT702P (Retail Blister)
KT702P-B (Bulk pack of 20)
1.5m Pre-Wired 7 Pin Small Round Trailer Socket, L.E.D

- Inbuilt LED circuit tester
- Spring loaded dustproof cover
- 7 pins rated to 15A at 12V



Model No. KT703P (Retail Blister)
KT703P-B (Bulk pack of 20)
1.5m Pre-Wired 7 Pin Flat Trailer Socket, L.E.D

- Inbuilt LED circuit tester
- Spring loaded dustproof cover
- 7 pins rated to 15A at 12V



Model No. KT707P (Retail Blister)
KT707P-B (Bulk pack of 20)
1.5m Pre-Wired 7 Pin Large Round Trailer Socket with 7 Core Flat Cable, L.E.D

- Inbuilt LED circuit tester
- Spring loaded dustproof cover
- 7 Core flat cable for internal boot wiring
- 7 pins rated to 30A at 12V

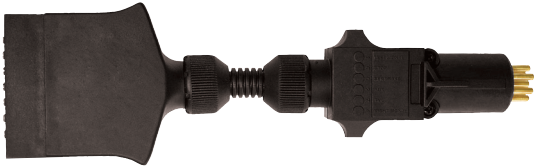


TRAILER PLUGS AND SOCKETS - Adaptors



Model No. KT750 (Retail Blister)
Suits 7 Pin Small Round Socket to 7 Pin Flat Plug

- 7 pins rated to 15A at 12V



Model No. KT751 (Retail Blister)
Suits 7 Pin Flat Socket to 7 Pin Small Round Plug

- 7 pins rated to 15A at 12V



Model No. KT752 (Retail Blister)
Suits 7 Pin Large Round Socket to 7 Pin Flat Plug

- 7 pins rated to 15A at 12V



Model No. KT753 (Retail Blister)
Suits 7 Pin Flat Socket to 7 Pin Large Round Plug

- 7 pins rated to 15A at 12V



Model No. KT754 (Retail Blister)
Suits 7 Pin Large Round Socket to 7 Pin Small Round Plug

- 7 pins rated to 15A at 12V



Model No. KT755 (Retail Blister)
Suits 7 Pin Small Round Socket to 7 Pin Large Round Plug

- 7 pins rated to 15A at 12V

TRAILER PLUGS AND SOCKETS - Adaptors, L.E.D

Model No. KT760 (Retail Blister)

Suits 7 Pin Small Round Socket to 7 Pin Flat Plug

- Inbuilt LED circuit tester
- 7 pins rated to 15A at 12V



Model No. KT761 (Retail Blister)

Suits 7 Pin Flat Socket to 7 Pin Small Round Plug

- Inbuilt LED circuit tester
- 7 pins rated to 15A at 12V



Model No. KT762 (Retail Blister)

Suits 7 Pin Large Round Socket to 7 Pin Flat Plug

- Inbuilt LED circuit tester
- 7 pins rated to 15A at 12V



Model No. KT763 (Retail Blister)

Suits 7 Pin Flat Socket to 7 Pin Large Round Plug

- Inbuilt LED circuit tester
- 7 pins rated to 15A at 12V



Model No. KT764 (Retail Blister)

Suits 7 Pin Large Round Socket to 7 Pin Small Round Plug

- Inbuilt LED circuit tester
- 7 pins rated to 15A at 12V



Model No. KT765 (Retail Blister)

Suits 7 Pin Small Round Socket to 7 Pin Large Round Plug

- Inbuilt LED circuit tester
- 7 pins rated to 15A at 12V



TRAILER PLUGS AND SOCKETS - Coil Adaptors, L.E.D

The issue of cable strain on towed vehicles can cause a plug or socket to pull out. Similarly should the lead be too long, then the cable may drag and suffer damage. The KT Car Coil Adaptors come with 1 metre of coiled cable allowing flexibility and prevents trailer plug disconnection. Each adaptor also features the KT built-in LED circuit tester.



Model No. KT770 (Retail Blister)
Suits 7 Pin Small Round Socket to 7 Pin Flat Plug

- 1m of coiled extension cable
- Built-in LED circuit tester
- 7 pins rated to 15A at 12V



Model No. KT771 (Retail Blister)
Suits 7 Pin Flat Socket to 7 Pin Small Round Plug

- 1m of coiled extension cable
- Built-in LED circuit tester
- 7 pins rated to 15A at 12V



Model No. KT772 (Retail Blister)
Suits 7 Pin Large Round Socket to 7 Pin Flat Plug

- 1m of coiled extension cable
- Built-in LED circuit tester
- 7 pins rated to 15A at 12V



Model No. KT773 (Retail Blister)
Suits 7 Pin Flat Socket to 7 Pin Large Round Plug

- 1m of coiled extension cable
- Built-in LED circuit tester
- 7 pins rated to 15A at 12V



Model No. KT774 (Retail Blister)
Suits 7 Pin Large Round Socket to 7 Pin Small Round Plug

- 1m of coiled extension cable
- Built-in LED circuit tester
- 7 pins rated to 15A at 12V



Model No. KT775 (Retail Blister)
Suits 7 Pin Small Round Socket to 7 Pin Large Round Plug

- 1m of coiled extension cable
- Built-in LED circuit tester
- 7 pins rated to 15A at 12V

TRAILER PLUGS AND SOCKETS - Coil Adaptors, L.E.D

Model No. KT776 (Retail Blister)

Suits 7 Pin Small Round Socket to 7 Pin Small Round Socket

- Socket to socket connection
- 1m of coiled extension cable
- Built-in LED circuit tester
- 7 pins rated to 15A at 12V



Model No. KT776E (Retail Blister)

Suits 7 Pin Small Round Socket to 7 Pin Small Round Plug

- Extension lead to provide length between connections
- 1m of coiled extension cable
- Built-in LED circuit tester
- 7 pins rated to 15A at 12V



Model No. KT777 (Retail Blister)

Suits 7 Pin Flat Socket to 7 Pin Flat Socket

- Socket to socket connection
- 1m of coiled extension cable
- Built-in LED circuit tester
- 7 pins rated to 15A at 12V



Model No. KT777E (Retail Blister)

Suits 7 Pin Flat Socket to 7 Pin Flat Plug

- Extension lead to provide length between connections
- 1m of coiled extension cable
- Built-in LED circuit tester
- 7 pins rated to 15A at 12V



Model No. KT778 (Retail Blister)

Suits 7 Pin Large Round Socket to 7 Pin Large Round Socket

- Socket to socket connection
- 1m of coiled extension cable
- Built-in LED circuit tester
- 7 pins rated to 15A at 12V



Model No. KT778E (Retail Blister)

7 Pin Large Round Socket to 7 Pin Large Round Plug

- Extension lead to provide length between connections
- 1m of coiled extension cable
- Built-in LED circuit tester
- 7 pins rated to 15A at 12V



TRAILER PLUGS AND SOCKETS - Suzi Coils



Model No. KT780

4.6m Short Tail to Short Tail, Large Round LED Trailer Plug to Large Round Standard Plug

- 7 core cable, 6 x 4mm (26/0.30) & 1 x 5mm (41/0.30)
- Built-in LED circuit tester



Model No. KT780N

4.6m Short Tail to Short Tail

- 7 core cable, 6 x 4mm (26/0.30) & 1 x 5mm (41/0.30)



Model No. KT781

4.6m Short Tail to Long Tail, Large Round LED Trailer Plug to Large Round Standard Plug

- 7 core cable, 6 x 4mm (26/0.30) & 1 x 5mm (41/0.30)
- Built-in LED circuit tester



Model No. KT781N

4.6m Short Tail to Long Tail

- 7 core cable, 6 x 4mm (26/0.30) & 1 x 5mm (41/0.30)

5M TRAILER SOCKET CIRCUIT TESTERS

The KT LED Trailer Socket Tester allows vehicle trailer sockets to be tested quickly and easily by just one person. Simply connect one end to the socket at the back of the vehicle and then, using the 5m lead, sit in the drivers seat and test indicators, park, brakes, reverse and service brakes where applicable. When tested, the LED's built into the plug will light up confirming if the circuit is functioning correctly.



Model No. KT701-741T

LED Circuit Tester to suit 7 Pin Small Round Trailer Sockets

- Inbuilt LED circuit tester
- 5m of cable



Model No. KT704-744T

LED Circuit Tester to suit 7 Pin Flat Trailer Sockets

- Inbuilt LED circuit tester
- 5m of cable



Model No. KT705-745T

LED Circuit Tester to suit 7 Pin Large Round Trailer Sockets

- Inbuilt LED circuit tester
- 5m of cable



TRAILER LIGHT CIRCUIT TESTER

The KT Trailer Light Circuit Tester allows users to power each individual circuit to their trailer, truck or caravan, allowing you to diagnose any faults in the trailer wiring system. The unit features a built-in fuse protected battery and a KT 7 Pin Flat LED trailer socket.

Model No. KT57900

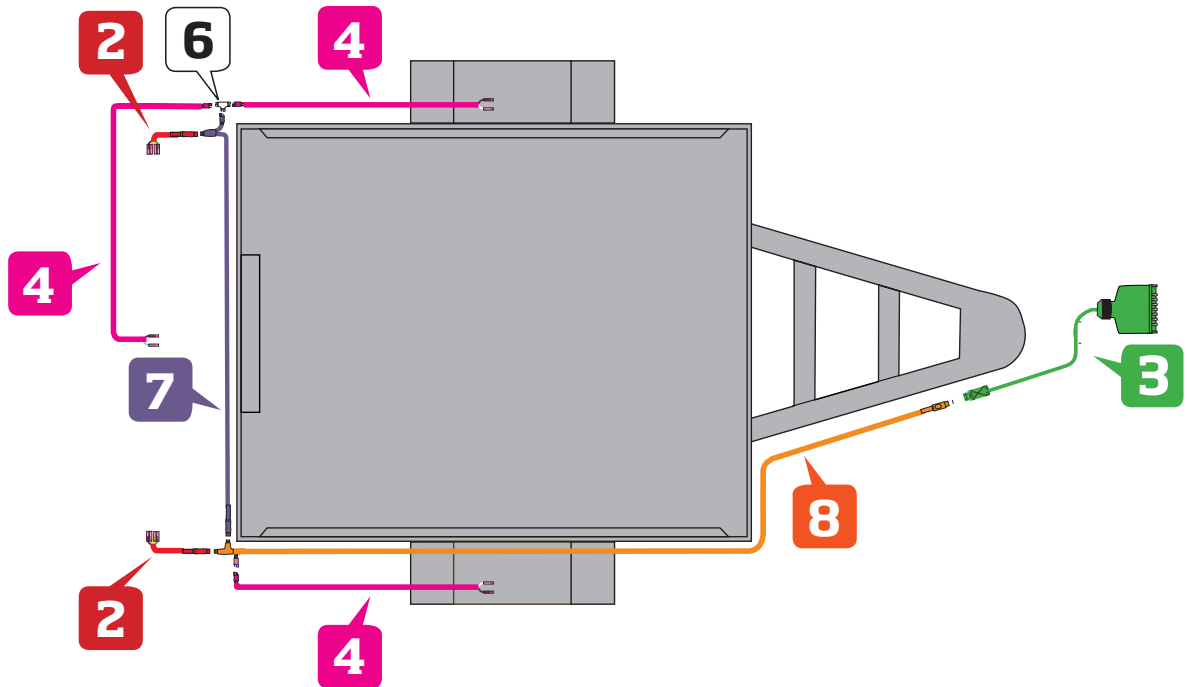
Trailer Light Circuit Tester

- Contains a rechargeable 12V 2.6A hour sealed lead acid battery
- Easy carry handle
- LED rocker switches

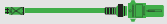


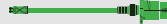





CLICK 'N' TOW COMPLETE KITS - Box Trailers

The KT Click 'n' Tow Trailer Harness system makes wiring up a trailer simple and easy. Available in various lengths for different size trailers, the system allows rear lamps, side markers and licence plate lamps of any type to be installed with ease.

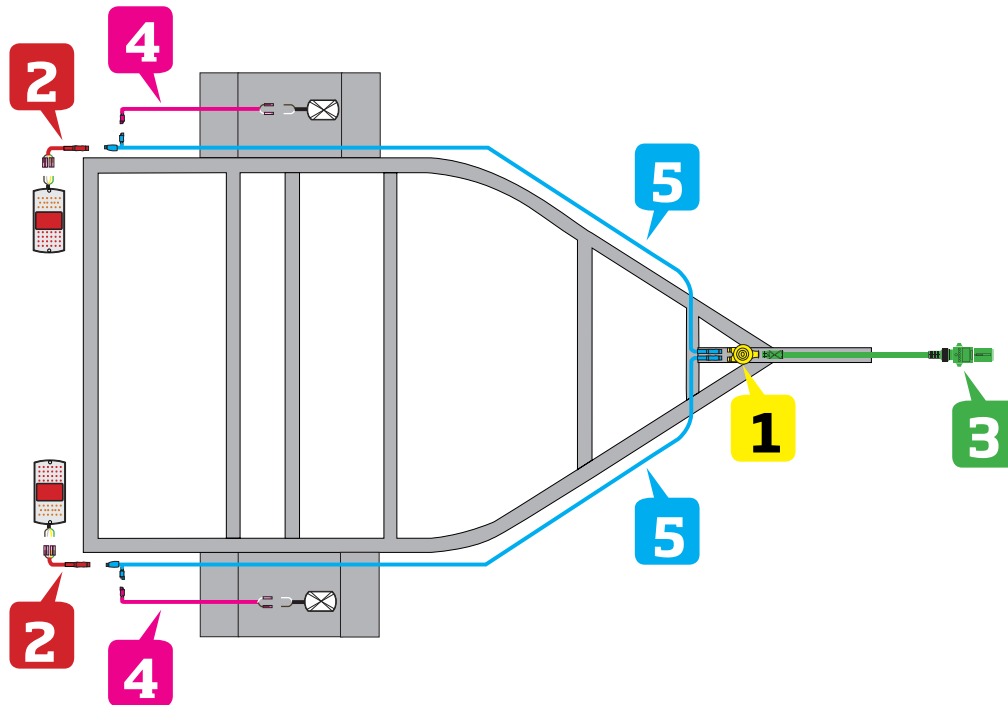






BOX TRAILER LAMP WIRING HARNESS KITS

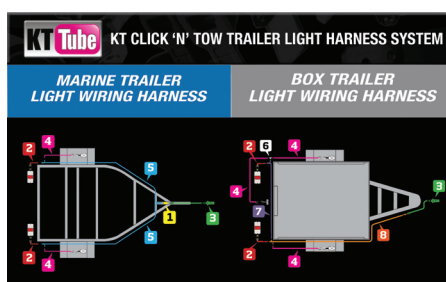
KIT MODEL No.	SUITS	PARTS INCLUDED:	BLISTER
KT58010	6x4 Box Trailers 7x4 Box Trailers 7 Pin Small Round Trailer Plug 	2 2 x 300mm Universal adaptor, allows fitting of any trailer lamp	
		3 1 x 7 pin small round trailer plug with 1m harness connector	
		4 3 x 1.2m Adaptor for side markers or licence plate lamp	
		6 1 x T-plug for side markers & licence plate lamps	
		7 1 x 1.5m Connects second (left) trailer lamp to main harness with 2 pin aux	
		8 1 x 3.7m Main harness from trailer plug to trailer lamp	
KT58011	6x4 Box Trailers 7x4 Box Trailers 7 Pin Flat Trailer Plug 	2 2 x 300mm Universal adaptor, allows fitting of any trailer lamp	
		3 1 x 7 pin flat trailer plug with 1m harness connector	
		4 3 x 1.2m Adaptor for side markers or licence plate lamp	
		6 1 x T-plug for side markers & licence plate lamps	
		7 1 x 1.5m Connects second (left) trailer lamp to main harness with 2 pin aux	
		8 1 x 3.7m Main harness from trailer plug to trailer lamp	
KT58012	6x4 Box Trailers 7x4 Box Trailers 7 Pin Large Round Trailer Plug 	2 2 x 300mm Universal adaptor, allows fitting of any trailer lamp	
		3 1 x 7 pin large round trailer plug with 1m harness connector	
		4 3 x 1.2m Adaptor for side markers or licence plate lamp	
		6 1 x T-plug for side markers & licence plate lamps	
		7 1 x 1.5m Connects second (left) trailer lamp to main harness with 2 pin aux	
		8 1 x 3.7m Main harness from trailer plug to trailer lamp	
KT58016	8x5 Box Trailers 9x5 Box Trailers 7 Pin Flat Trailer Plug 	2 2 x 300mm Universal adaptor, allows fitting of any trailer lamp	
		3 1 x 7 pin flat trailer plug with 1m harness connector	
		4 3 x 1.2m Adaptor for side markers or licence plate lamp	
		6 1 x T-plug for side markers & licence plate lamps	
		7 1 x 1.5m Connects second (left) trailer lamp to main harness with 2 pin aux	
		8 1 x 4.8m Main harness from trailer plug to trailer lamp	

CLICK 'N' TOW COMPLETE KITS - Marine Trailers

The KT Click 'n' Tow Trailer Harness system makes wiring up a trailer simple and easy. Available in various lengths for different size trailers, the system allows rear lamps, side markers and licence plate lamps of any type to be installed with ease. The Marine Trailer system uses a Y-Splitter Plug to avoid the need to run a cable across the rear of the trailer.



MARINE TRAILER LAMP WIRING HARNESS KITS			
KIT MODEL No.	SUITS	PARTS INCLUDED:	BLISTER
KT58021	6 & 7M Box Trailers 7 Pin Flat Trailer Plug 	<ul style="list-style-type: none"> 1 1 x Y-splitter 2 2 x 300mm Universal adaptor, allows fitting of any trailer lamp 3 1 x 7 pin small round trailer plug with 1m harness connector 4 2 x 1.2m Adaptor for side markers or licence plate lamp 5 2 x 6m Main harness from trailer plug to trailer lamp 	
KT58026	8M & 9M Box Trailers 7 Pin Flat Trailer Plug 	<ul style="list-style-type: none"> 1 1 x Y-splitter 2 2 x 300mm Universal adaptor, allows fitting of any trailer lamp 3 1 x 7 pin small round trailer plug with 1m harness connector 4 2 x 1.2m Adaptor for side markers or licence plate lamp 5 2 x 8m Main harness from trailer plug to trailer lamp 	



Watch our video demonstration of the Click 'N' Tow Wiring Harness being installed on a Box Trailer by scanning the QR Code.



REFLECTORS

60mm Dia Retro Reflector with Central Fixing Hole, ADR Approved

KT57410S - Clear, Retail Blister of 2
 KT57410 - Clear, Bulk Pack of 50

KT57411S - Amber, Retail Blister of 2
 KT57411 - Amber, Bulk Pack of 50

KT57412S - Red, Retail Blister of 2
 KT57412 - Red, Bulk Pack of 50



70 x 28mm Retro Reflector with Adhesive Backing, ADR Approved

KT57435S - Clear, Retail Blister of 2
 KT57435 - Clear, Bulk Pack of 50

KT57436S - Amber, Retail Blister of 2
 KT57436 - Amber, Bulk Pack of 50

KT57437S - Red, Retail Blister of 2
 KT57437 - Red, Bulk Pack of 50



94 x 44mm Retro Reflector with Adhesive Backing, ADR Approved

KT57450S - Clear, Retail Blister of 2
 KT57450 - Clear, Bulk Pack of 50

KT57451S - Amber, Retail Blister of 2
 KT57451 - Amber, Bulk Pack of 50

KT57452S - Red, Retail Blister of 2
 KT57452 - Red, Bulk Pack of 50



TOW BALLS & ACCESSORIES

Model No. KT70110 Chrome Tow Ball

- Shank size 7/8" x 50mm
- 3500kg load rating
- ADR Approved 62/02 & AS4177.2-2004



Model No. KT70105 KT70105-12 (Merchandiser of 12) High Visibility Tow Ball Cover - Chrome

- High visibility at night, glows in the dark
- Protects clothing from dirt and grease
- Suits regular 7/8" x 50mm tow balls
- Available in a counter top display (Qty 12)



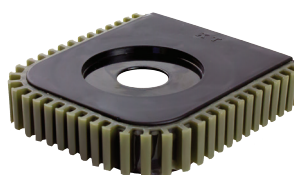
Model No. KT70106 KT70106-12 (Merchandiser of 12) High Visibility Tow Ball Cover - Black

- High visibility at night, glows in the dark
- Protects clothing from dirt and grease
- Suits regular 7/8" x 50mm tow balls
- Available in a counter top display (Qty 12)



Model No. KT70100 KT70100-18 (Merchandiser of 18) High Visibility Shin Protector

- High visibility at night, glows in the dark
- Protects clothing from dirt and grease
- Suits regular tow tongues
- Available in a counter top display (Qty 18)



TRAILER PLUGS AND SOCKETS - Wiring Diagrams

Fitting Instructions for Trailer Plugs and Sockets

7 PIN SMALL ROUND TRAILER PLUG
KT741

CIRCUIT	COLOUR
1 Left Indicator	Yellow
2 Aux/Rev	Black
3 Earth	White
4 Right Indicator	Green
5 Service Brakes	Blue
6 Stop Brakes	Red
7 Tail Lights	Brown

7 PIN SMALL ROUND TRAILER SOCKET
KT742

CIRCUIT	COLOUR	CIRCUIT	COLOUR
1 Left Indicator	Yellow	5 Service Brakes	Blue
2 Aux/Rev	Black	6 Stop Brakes	Red
3 Earth	White	7 Tail Lights	Brown
4 Right Indicator	Green		

7 PIN FLAT FEMALE TRAILER SOCKET
KT743

CIRCUIT	COLOUR
1 Left Indicator	Yellow
2 Aux/Rev	Black
3 Earth	White
4 Right Indicator	Green
5 Service Brakes	Blue
6 Stop Brakes	Red
7 Tail Lights	Brown

7 PIN FLAT MALE TRAILER PLUG
KT744

CIRCUIT	COLOUR
1 Left Indicator	Yellow
2 Aux/Rev	Black
3 Earth	White
4 Right Indicator	Green
5 Service Brakes	Blue
6 Stop Brakes	Red
7 Tail Lights	Brown

7 PIN LARGE ROUND TRAILER PLUG
KT745

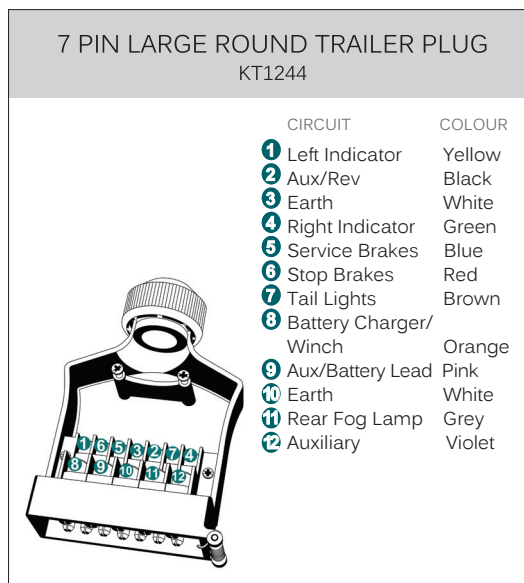
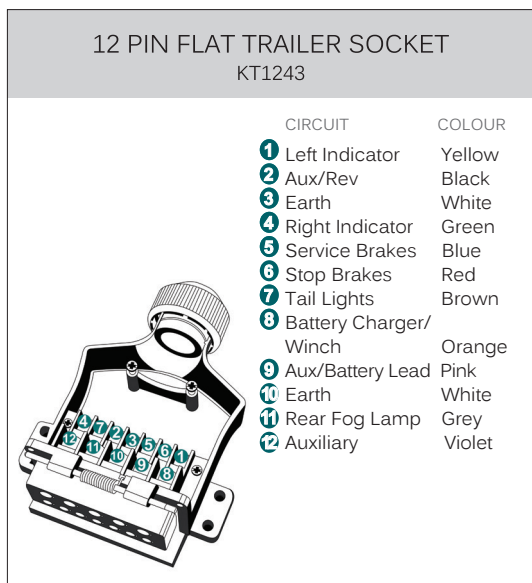
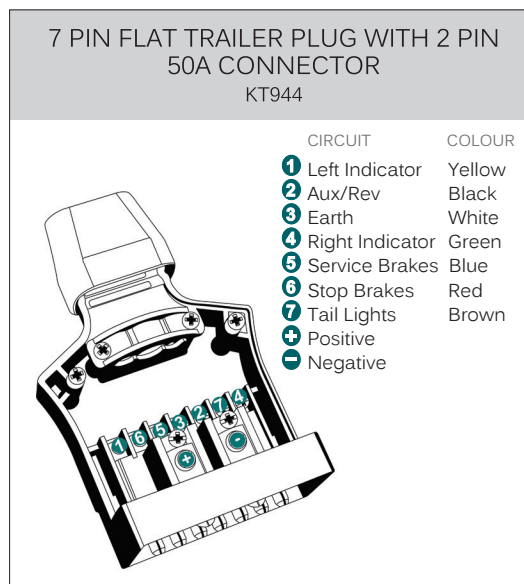
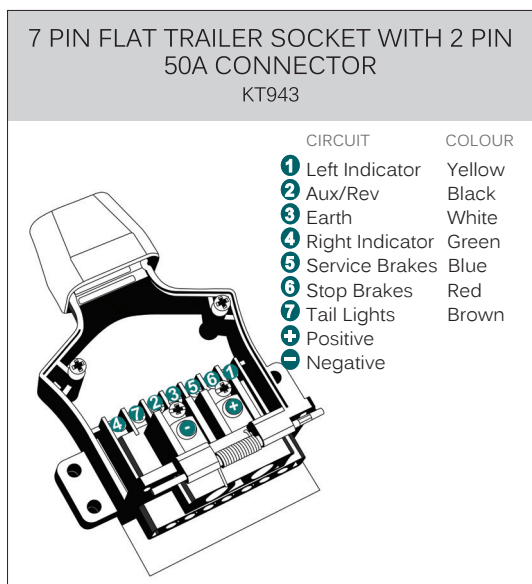
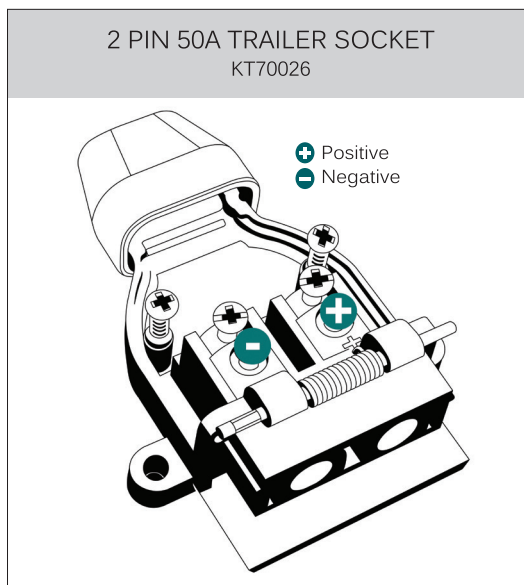
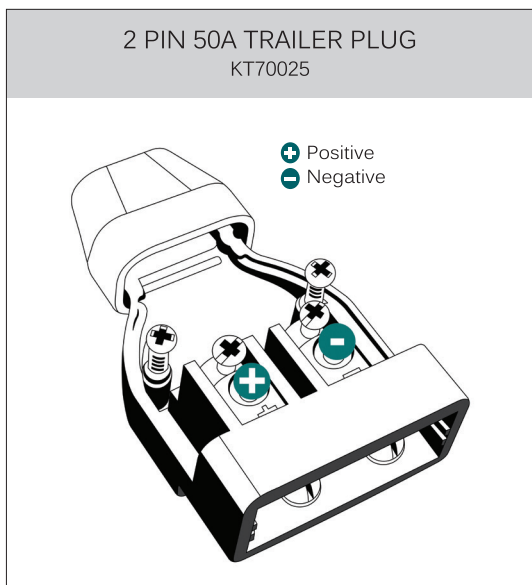
CIRCUIT	COLOUR
1 Left Indicator	Yellow
2 Aux/Rev	Black
3 Earth	White
4 Right Indicator	Green
5 Service Brakes	Blue
6 Stop Brakes	Red
7 Tail Lights	Brown

NOTE: KT747 ALSO USES THIS WIRING DIAGRAM

7 PIN LARGE ROUND TRAILER SOCKET
KT746

CIRCUIT	COLOUR
1 Left Indicator	Yellow
2 Aux/Rev	Black
3 Earth	White
4 Right Indicator	Green
5 Service Brakes	Blue
6 Stop Brakes	Red
7 Tail Lights	Brown

TRAILER PLUGS AND SOCKETS - Wiring Diagrams



THE KT WEBSITE

KT LATEST PRODUCTS

KT is continually designing innovative products and want to let you know all about them! visit our 'Latest Products' page on our website to download any New Product Releases in PDF format. These can also be saved or printed. Visit www.ktcables.com.au for more information.



KT PRODUCT CATALOGUE

Our Innovative KT Product Catalogue with over 2,000 products is available for download directly off our website.

Visit www.ktcables.com.au to download today!



KT BLOG

The KT Blog has been successful in supporting and educating customers and the general public on KT Products since it's launch in 2014. Customers are able to share knowledge and technical information through social media channels and on their own websites.



KT TUBE

Browse through our online Video Gallery 'KT Tube' to learn about our innovative products being installed in a variety of applications. KT Tube is designed to educate our customers on KT Products and provide virtual support. Visit www.ktcables.com.au/kt-tube



KT E-NEWSLETTER

KT's E-Newsletter is delivered weekly to it's subscribers with new and exciting products, industry news, product video demonstrations, blog posts, monthly promotions and more! subscribe at www.ktcables.com.au to keep up-to-date!



KT SOCIAL MEDIA

Follow our social media pages to keep up-to-date with the latest news, new products and competitions!

Facebook: facebook.com.au/ktcables
Twitter: twitter.com/KT_Cables
Instagram: [@ktcableaccessories](https://www.instagram.com/ktcableaccessories)



ORDERING ONLINE

KT provides an online ordering facility on our website to make ordering at anytime easy! Our friendly sales team will respond to you with a tracking number which will allow you to track your order after it has been dispatched.

