

# SOLAR SOLUTIONS

PRODUCT CATALOGUE

Edition 3





KT Solar is industry renowned for its commitment to producing premium quality, innovative solar products for use in a comprehensive range of applications including Off-Road, 4WD, Marine, Mining, Industrial, Home DIY, Recreational, Camping & Outdoors & much more.

KT Solar design and develop their own products with innovative & unique points of difference. KT Solar's mission is to lead the Industry through innovative solar solutions.

KT Solar offers an industry leading 10 year manufacturing warranty on the build of all 12V single cell monocrystalline solar panels, coupled with a 25 year efficiency guarantee.

***...Difficult to beat, right?...***

We are extremely proud of our ability to continuously evolve as new technologies become available to us. Our team of solar enthusiasts are continuously conceptualising new and exciting ideas - allowing us to create products that serve you best.

But that's not all. Our ultimate mission is to help educate & inspire you in solar - and help you understand the world of opportunities solar can provide for you.

# CONTENTS

<b>12V Monocrystalline Single Cell Solar Panels</b>	<b>5</b>
<b>Solar Charging Systems for 36-48V &amp; 24-48V</b>	<b>11</b>
<b>Portable Folding Solar Solutions</b>	<b>15</b>
<b>Solar Panel Mounting Solutions</b>	<b>21</b>
<b>Solar Charge Controllers</b>	<b>23</b>
<b>Innovative Power Accessories</b>	<b>29</b>
<b>Solar Leads &amp; Connectors</b>	<b>35</b>
<b>Heavy Duty Solar Connectors</b>	<b>45</b>
<b>Solar Related Tools</b>	<b>49</b>
<b>Part Number Index</b>	<b>53</b>

# KT SOLAR

## Authorised Fitment Centres

KT Solar has a national network of 'KT Solar Fitment Centres' dedicated to fitting KT Solar products including dual battery systems, complete Solar charging systems on 4wd's, RV's, caravans, motorhomes, campers, boats, yachts, recreational electric vehicles such as golf carts and more.

Our network of Solar Specialists are there to make solar easy for you, providing expert advice, quality products and affordable solar fitment packages tailored to your needs.



**EXPERT ADVICE  
BY SOLAR  
SPECIALISTS**



**PROFESSIONAL  
HASSLE-FREE  
INSTALLATIONS**



**10 YEAR WARRANTY +  
25 YEAR EFFICIENCY  
GUARANTEE**



**SOLAR TO SUIT  
DUAL BATTERY  
SYSTEMS**



**ROOF TOP SOLAR  
FOR CARAVANS,  
RV'S AND  
MOTORHOMES**



**SOLAR SOLUTIONS  
FOR MARINE  
APPLICATIONS**



**CAMPING &  
PORTABLE SOLAR  
SOLUTIONS**



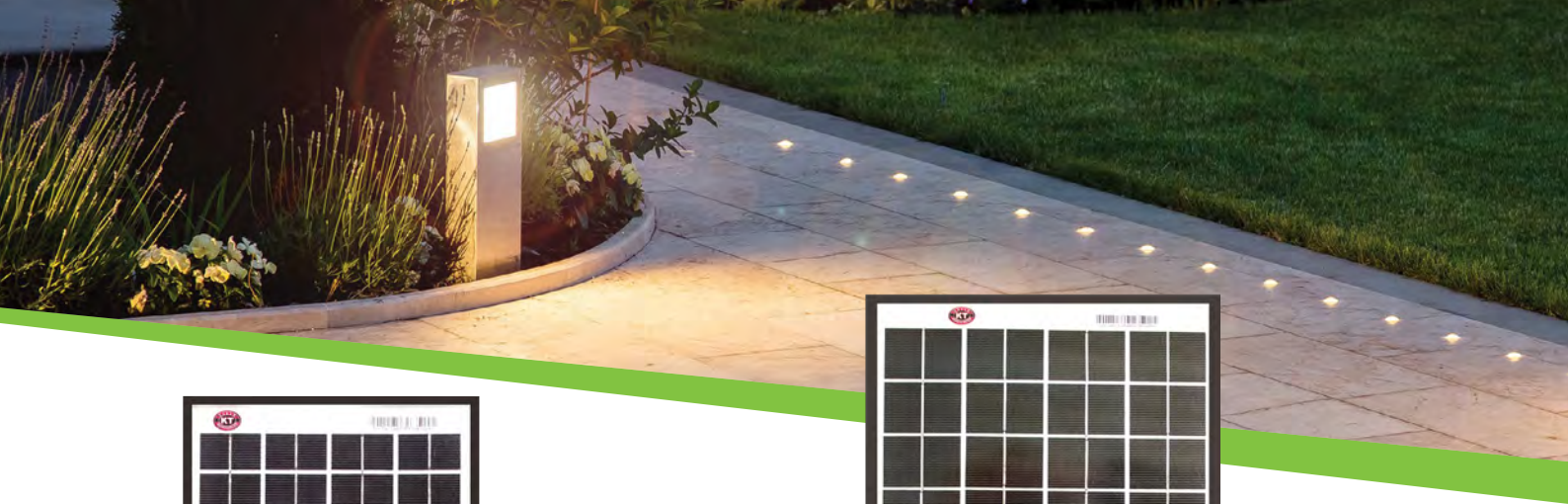
**CLICK HERE TO FIND YOUR  
NEAREST KT SOLAR FITMENT  
CENTRE**

**CLICK HERE TO LEARN MORE  
ABOUT KT SOLAR PRODUCTS**





# **12V SINGLE CELL MONOCRYSTALLINE SOLAR PANELS**

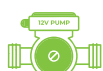


### MODEL KT70714 5W, 12V MONOCRYSTALLINE SINGLE CELL SOLAR PANEL

- Designed for maintenance charging (trickle-charging) of 12V lead acid batteries that power garden lighting & 12V water pumps
- Can be used unregulated (without solar controller)
- Direct connection to batteries with 3M PV cables with positive ( + ) & negative ( - ) alligator clamps
- Dimensions (mm): 290 (H) x 160 (W) x 17 (D)
- Weight (Kg): 0.60

#### Specifications

Power Tolerance	+3%
Maximum Power (Pmax)	5Wp
Maximum Power Voltage (Vmp)	18.0V
Maximum Power Current (Imp)	0.28A
Rated Voltage	12V
Open Circuit Voltage (Voc)	21.5V
Short Circuit Current (Isc)	0.30A
Operating Temperature	-40°C to +85°C
Product Application	Class A
Max System Voltage	1000V DC

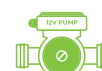


### MODEL KT70715 10W, 12V MONOCRYSTALLINE SINGLE CELL SOLAR PANEL

- Designed for maintenance charging (trickle-charging) of 12V lead acid batteries that power garden lighting & 12V water pumps
- Can be used unregulated (without solar controller)
- Direct connection to batteries with 3M PV cables with positive ( + ) & negative ( - ) alligator clamps
- Dimensions (mm): 355 (H) x 225 (W) x 17 (D)
- Weight (Kg): 1.10

#### Specifications

Power Tolerance	+3%
Maximum Power (Pmax)	10Wp
Maximum Power Voltage (Vmp)	18.0V
Maximum Power Current (Imp)	0.56A
Rated Voltage	12V
Open Circuit Voltage (Voc)	21.5V
Short Circuit Current (Isc)	0.61A
Operating Temperature	-40°C to +85°C
Product Application	Class A
Max System Voltage	1000V DC





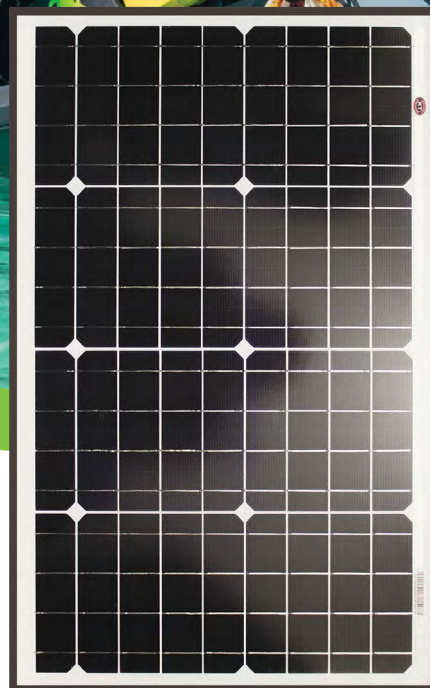
## MODEL KT70716

### 20W, 12V MONOCRYSTALLINE SINGLE CELL SOLAR PANEL

- Designed for maintenance charging (trickle-charging) of 12V lead acid batteries that power jet-skis, motorcycles, ride-on lawn mowers, surveillance camera systems, home irrigation systems, electric fences, electric gates & garden lighting
- Requires regulation by solar charge controller
- Easy direct connection to batteries with 3M PV cables with pos ( + ) & neg ( - ) alligator clamps
- Dimensions (mm): 483 (H) x 343 (W) x 17 (D)
- Weight (Kg): 1.80

#### Specifications

Power Tolerance	+3%
Maximum Power (Pmax)	20Wp
Maximum Power Voltage (Vmp)	18.1V
Maximum Power Current (Imp)	1.11A
Rated Voltage	12V
Open Circuit Voltage (Voc)	21.6V
Short Circuit Current (Isc)	1.21A
Operating Temperature	-40°C to +85°C
Product Application	Class A
Max System Voltage	1000V DC



## MODEL KT70717

### 40W, 12V MONOCRYSTALLINE SINGLE CELL SOLAR PANEL

- Designed for maintenance charging (trickle-charging) 12V batteries
- Ideal for installation on 4wds, caravans, motorhomes, jettys for charging small 12V boat & jet-ski batteries.
- Ideal for 12V home surveillance systems, garden lighting, irrigation, electric fences / gates
- Requires regulation by solar charge controller
- Connect to batteries with 900mm PV cables with pos ( + ) & neg ( - ) TUV certified MC4 connectors.
- Dimensions (mm): 420 (H) x 670 (W) x 25 (D)
- Weight (Kg): 3.20

#### Specifications

Power Tolerance	+3%
Maximum Power (Pmax)	40Wp
Maximum Power Voltage (Vmp)	18.2V
Maximum Power Current (Imp)	2.19A
Rated Voltage	12V
Open Circuit Voltage (Voc)	21.6V
Short Circuit Current (Isc)	2.42A
Operating Temperature	-40°C to +85°C
Product Application	Class A
Max System Voltage	1000V DC



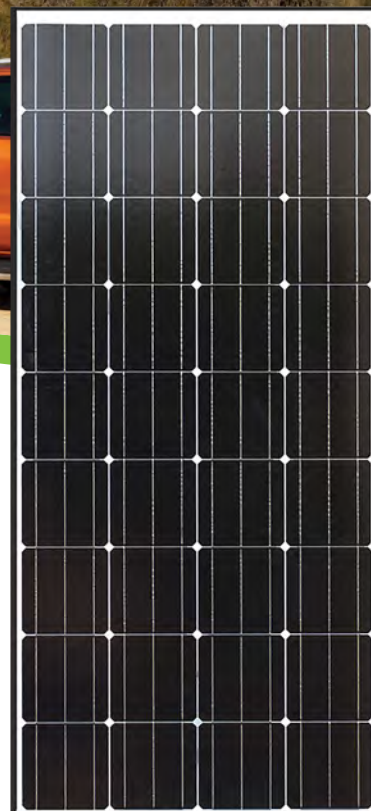


### MODEL KT70728 120W, 12V MONOCRYSTALLINE SINGLE CELL SOLAR PANEL

- Ideal for installation on 4wds, caravans, campers, motorhomes, commercial vehicles, boats & yachts
- Ideal for home & rural applications including 12V home surveillance systems, irrigation systems, electric fences / gates & off-grid shed power
- Requires regulation by solar charge controller
- Direct connection to batteries with 900mm PV cables with positive ( + ) & negative ( - ) TUV certified MC4 connectors
- Dimensions (mm): 945(H) x 670(W) x 35 (D)
- Weight (Kg): 6.90

#### Specifications

Power Tolerance	+3%
Maximum Power (Pmax)	120Wp
Maximum Power Voltage (Vmp)	19.0V
Maximum Power Current (Imp)	6.32A
Rated Voltage	12V
Open Circuit Voltage (Voc)	22.5V
Short Circuit Current (Isc)	6.97A
Operating Temperature	-40°C to +85°C
Product Application	Class A
Max System Voltage	1000V DC



### MODEL KT70729 200W, 12V MONOCRYSTALLINE SINGLE CELL SOLAR PANEL

- Ideal for installation on 4wd's, caravans, campers, motorhomes, commercial vehicles, boats & yachts
- Ideal for home & rural applications including off-grid shed power
- Requires regulation by solar charge controller
- Direct connection to batteries with 900mm PV cables with positive ( + ) & negative ( - ) TUV certified MC4 connectors
- Dimensions (mm): 1476 (H) x 670 (W) x 35 (D)
- Weight (Kg): 11.50

#### Specifications

Power Tolerance	+3%
Maximum Power (Pmax)	200Wp
Maximum Power Voltage (Vmp)	19.6V
Maximum Power Current (Imp)	10.20A
Rated Voltage	12V
Open Circuit Voltage (Voc)	23.2V
Short Circuit Current (Isc)	11.27A
Operating Temperature	-40°C to +85°C
Product Application	Class A
Max System Voltage	1000V DC



# TRAINING OPPORTUNITIES

*We specialise in making solar easy*

## CONFIDENCE AT THE COUNTER



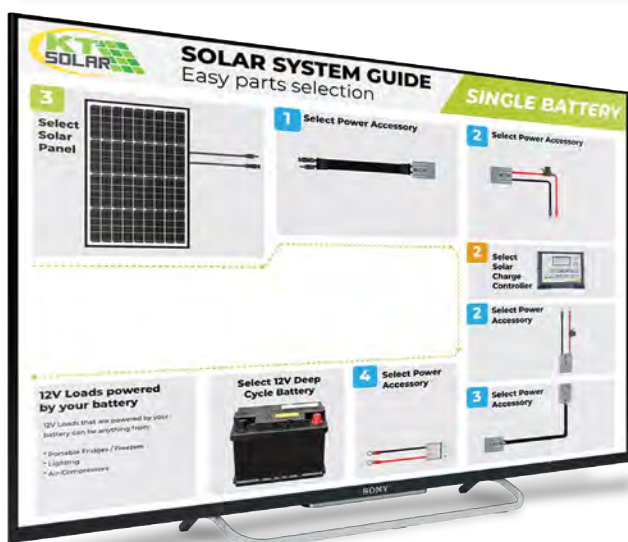
KT Solar offers in-store training as well as a variety of support & educational tools to assist your team in understanding the basics of solar and improve confidence at the counter.

Our resident solar specialists have a wealth of knowledge and passion around solar, battery power and benefits for the recreational user. We understand that there are many technical questions that your team may have to face when selling solar and our training tools are here to help you!

## IN-STORE TRAINING

Participate in a complimentary team training night at an organised time with one of our knowledgeable and experienced solar specialists.

Each of your team members will receive a KT Solar training handbook, complete with detailed information on solar, and be given opportunities throughout the session to ask any relevant questions. You will also have full access to our blog posts, video demonstrations, podcasts, and KT Solar calculator to support you and educate your customers.



## WEBINARS & LIVE STREAMS

Why not arrange a solar training session with our resident solar specialist over Microsoft Teams or Zoom?... Online training is a great way to engage your team through solar training remotely.

Simply email [marketing@ae4a.com.au](mailto:marketing@ae4a.com.au) for more information.





# KT SOLAR Calculator

The KT Solar Calculator is  
an online tool designed to  
'make solar easy!'  
in just a few simple  
steps . . .



1

**SELECT YOUR  
APPLICATION**

2

**ENTER YOUR  
BATTERY CAPACITY  
& DAYS OFF GRID**

3

**SELECT YOUR SOLAR  
PANELS FROM THE  
DROP DOWN MENU  
(GUIDE ONLY)**

4

**SELECT YOUR LOADS**

5

**YOUR RESULTS WILL  
BE CALCULATED**

**CLICK HERE TO  
LEARN MORE OR  
ACCESS THE SOLAR  
CALCULATOR**

This application will only operate using Adobe Acrobat Reader Version 8 or higher. You may need to configure your browser to open PDF's with Adobe Acrobat Reader



# **SOLAR CHARGING SYSTEMS FOR 36-48V & 24-48V**



View the performance of your solar system while you are on or off the course easily via the Smartphone Application. Monitor Volts, Amps and Watts of your system in real time.



## MODEL KT70777

### 160W, 36-48V ELECTRIC VEHICLE SOLAR CHARGING SYSTEM

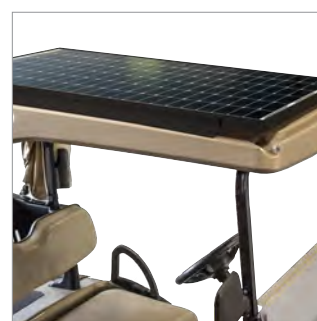
This system is ideal for carts, service vehicles & resort electric vehicles operating on 36V and 48V Systems. This DIY, easy to install system features 'EZY' rails for mounting to your electric vehicles roof. This solar charging system both maintains and extends battery life while reducing sulphur buildup & D.O.D (depth of discharge). This kit will reduce 240V charging time & the associated costs.

#### Features

- Suits cart roofs of various popular models
- System voltage: 36-48V systems
- Premium MPPT Solar Controller (IP43 & IP22 Rated) with optional "real time" Volts/Amps/Watts visible via smartphone app
- Panel Dimensions (mm) : 1280 x 800 x 35
- Panel Weight (Kg): 11.8
- Five accreditation certificates
- Individually barcoded for warranty registration

#### Kit Includes

- 1 x 160W Monocrystalline Solar Panel
- 1 x MPPT Solar Charge Controller
- 1 x Automatic reset 30A circuit breaker
- 1 x Red circuit breaker cover
- 2 x 50A Heavy duty connectors & handle
- 2M x 5mm twin sheath cable
- 2 x Insulated ring terminals, 6mm yellow
- 2 x Insulated ring terminals, 8mm yellow
- 3M x 10mm corrugated split loom tubing
- 2 x 20mm nylon cable glands
- 25 x Black cable ties
- 2 x EZY mounting rails, 800mm length



#### Warranties & Guarantees

10 Year Warranty / 25 year efficiency on solar panel  
5 year warranty on MPPT solar controller  
3 Year warranty on complete kit





## MODEL KT70721

### 160W, 24-48V TRUCK, BUS & YACHT SOLAR CHARGING SYSTEM

Designed & Innovated by KT Solar. This system is designed to suit prime mover truck cabin roofs, caravans, small commercial buses including Toyota Coasters and marine vessels.

This system works in conjunction with the Victron 100-20 MPPT Solar Controller. The Solar Panel is a higher nominal voltage than 24V, however the Victron controller automatically steps down to provide the correct voltage and current.

#### Features

- Operates on 24-48V systems
- Premium MPPT 100 - 20 Victron solar controller
- Maintains and extends battery life & reduces sulphur buildup D.O.D (depth of discharge)
- Reduces 240 volt charging time & associated cost
- Five accreditation certificates
- Individually barcoded for warranty registration
- Panel Dimensions (mm): 1280 x 800 x 35
- Panel Weight (Kg): 11.8

#### Kit Includes

- Premium quality MPPT Solar Controller (IP43 & IP22 Rated)
- 144 cell 160W monocrystalline solar panel
- 2 x EZY mounting rails, 800mm length



Ideal for large boats and yachts.



Trickle-charge your batteries whilst offshore.

#### Warranties & Guarantees

10 Year Warranty / 25 year efficiency on solar panel  
5 year warranty on MPPT solar controller  
3 Year warranty on complete kit





We are here to share our wealth of knowledge and experience in solar with you, through our KT Blog.

The KT blog features a variety of resources and articles written by our team of solar experts.

You will find information on all things solar - including the latest products and innovations, time-saving tips & tricks, how-tos, DIY, educational and technical knowledge.

We offer expert tools and practical, simplified information to remove the complications around understanding solar.

KT Solar aims to empower you in making confident, informed decisions regarding the ideal solar set up to power your off grid adventures.



**CLICK HERE TO  
VISIT OUR BLOG**





# PORTABLE FOLDING SOLAR SOLUTIONS



## MODEL KT70713

### 200W, 12V MONOCRYSTALLINE PORTABLE SOLAR BLANKET KIT

The 200W, 12V Portable Solar Blanket is a compact, light-weight solution to your solar needs. Whether camping, caravanning, or four-wheel driving off-road, KT Solar blankets are the perfect solution for maintaining batteries to power portable fridges, camping lights, air-compressors and other 12V equipment.

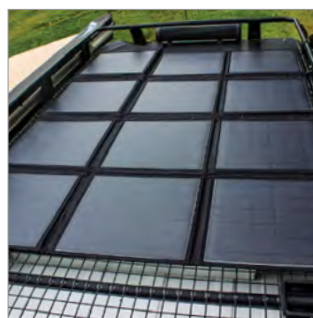
The solar blanket is suitable for maintenance charging of gel, wet, AGM, calcium & lithium batteries and includes a 20Amp 12V PWM solar charge controller.

#### Features

- One-piece easy-fold solar blanket with 12 solar cells (4 x horizontal, 3 x vertical)
- Dimensions Folded (mm): 400 x 400 x 135
- Dimensions Unfolded (mm): 1526 x 1140 x 5
- Weight (Kg): 7.53

#### Specifications

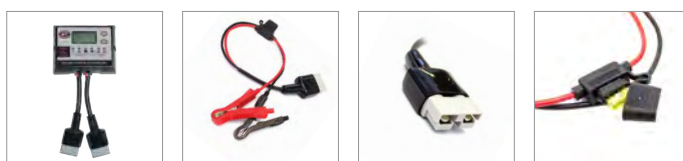
Power Tolerance	+3%
Maximum Power (Pmax)	200Wp
Maximum Power Voltage (Vmp)	18V
Maximum Power Current (Imp)	11.11A
Rated Voltage	12V
Open Circuit Voltage (Voc)	21V
Short Circuit Current (Isc)	11.54A
Operating Temperature	-40°C to +85°C
Product Application	Class A
Max System Voltage	600V DC



#### Warranty

2 Year warranty on complete kit





## MODEL KT70723 300W, 12V MONOCRYSTALLINE PORTABLE SOLAR BLANKET KIT

The 300W, 12V Portable Solar Blanket is an industry first innovation by KT Solar, putting out a powerful 300 Watts!

Ideal for off-road adventures, camping & caravanning trips, the 300W solar blanket comes complete with power leads and a 20Amp PWM solar charge controller which is capable of charging gel, wet, AGM, calcium & lithium batteries. Folding down to a convenient briefcase style carry bag, the 300W solar blanket is the ultimate space-saving solar solution to keep your 12V batteries full of charge.

### Features

- One-piece easy-fold blanket with 15 solar cells (5 x horizontal, 3 x vertical)
- Dimensions Folded (mm): 390 x 380 x 140  
Dimensions Unfolded (mm): 1526 x 1140 x 5
- Weight (Kg): 8.85

### Specifications

Power Tolerance	+3%
Maximum Power (Pmax)	300Wp
Maximum Power Voltage (Vmp)	18.8V
Maximum Power Current (Imp)	15.95A
Rated Voltage	12V
Open Circuit Voltage (Voc)	22.1V
Short Circuit Current (Isc)	16.42A
Operating Temperature	-40°C to +85°C
Product Application	Class A
Max System Voltage	600V DC



### Warranty

2 Year warranty on complete kit





## MODEL KT70727

### 120W, 12V PORTABLE FOLDING SOLAR MAT KIT

The new & innovative 120W, 12V portable folding solar mat is designed for maintenance charging of 12V batteries.

The 120W solar mat is made up of 6 x 20W solar cells, folding out into a single row. The kit includes power leads with alligator clamps for easy connection to battery and a 10Amp, 12V PWM solar charge controller which displays battery voltage, battery capacity, battery percentage, ambient temperature & load mode. For ultimate solar harvest, the 120W solar mat can be laid flat across a vehicle windscreen, or mounted via the corner eyelets.

#### Features

- Ideal size for ultimate solar harvest
- 6 x 20W Powerful Monocrystalline Cells
- Unique, compact size for storage convenience
- Folded dimensions (mm): 395 x 360 x 80
- Unfolded dimensions (mm): 2285 x 360 x 5
- Flexible charging capabilities
- Compatible with wet, AGM & calcium batteries
- Ideal for camping, 4wd & outdoor applications
- Perfect for charging 12V batteries that power camping fridges, lighting, air-compressors & other 12V devices
- Includes 10Amp PWM solar charge controller
- Includes 50A heavy duty connector to pos ( + ) / neg ( - ) battery clamps, 550mm lead
- Weight (Kg): 5.0
- Unique Neoprene carry pouch



#### Specifications

Power Tolerance	+3%
Maximum Power (Pmax)	120Wp
Maximum Power Voltage (Vmp)	19.6V
Maximum Power Current (Imp)	6.12A
Rated Voltage	12V
Open Circuit Voltage (Voc)	23.2V
Short Circuit Current (Isc)	6.67A
Operating Temperature	-40°C to +85°C
Product Application	Class A
Max System Voltage	1000V DC

#### Warranty

12 Month warranty on complete kit





## MODEL KT70710

### 120W, 12V PORTABLE FOLDING SOLAR KIT

The highly efficient 120W Portable Folding Solar Kit is comprised of 2 x 60W solar cells configured in parallel. The kit includes a 10M extension lead & a 0.5M lead terminated to alligator clamps for simple connection to power. The kit includes a 10Amp, 12V PWM solar charge controller.

#### Features

- Powerful 120W, 12V portable 'brief-case' style kit
- Dimensions folded (mm) 710 x 510 x 65
- Dimensions unfolded (mm): 1020 x 710 x 30
- 10 Amp, 12V PWM solar charge controller
- Solar charge controller IP rating: IP65
- Solar controller is compatible with gel, wet, AGM, calcium & lithium batteries
- Controller features reverse polarity, short circuit and over voltage protection
- 10M, 50Amp extension lead
- Positive & negative alligator clamps, 500mm Lead to 50 Amp, 12-48V connector
- Sturdy aluminium leg supports
- Quality stainless steel latches and hinges
- Controller securely mounted to the panel supports, reducing de-rating
- Protective ABS corners
- Heavy duty swivel carry handle
- Heavy duty storage bag
- Weight (Kg): 9.5



#### Specifications

Power Tolerance	+3%
Maximum Power (Pmax)	120Wp
Maximum Power Voltage (Vmp)	17.8V
Maximum Power Current (Imp)	6.74A
Rated Voltage	12V
Open Circuit Voltage (Voc)	21.0V
Short Circuit Current (Isc)	7.74A
Operating Temperature	-40°C to +85°C
Product Application	Class A
Max System Voltage	1000V DC

#### Warranty

12 Month warranty on complete kit



**12** MONTH WARRANTY



## MODEL KT70731

### 200W, 12V PORTABLE FOLDING SOLAR KIT WITH DUAL CHARGE FEATURE

The 200W Portable Folding Solar Kit is comprised of 2 x 100W solar cells configured in parallel. The kit includes 2 x 5M extension leads & 2 x 0.5M connector leads to alligator clamps for simple connection to power. The kit includes a 15Amp, 12V Dual Charging PWM solar charge controller - allowing the user to charge two 12V batteries simultaneously.

#### Features

- Powerful 200W 12V portable 'brief-case' style kit
- Dimensions folded (mm): 787 x 688 x 65
- Dimensions unfolded (mm): 1376 x 688 x 30
- 15 Amp 12V PWM dual solar charge controller for charging two 12V batteries simultaneously
- Solar charge controller IP rating: IP65
- Solar controller is compatible with gel, wet, AGM, calcium & lithium batteries
- Controller features reverse polarity, short circuit and over voltage protection
- 2 x 5M, 50 Amp, 12-48V connector extension leads for simple connection to power
- 2 x 0.5M, 50 Amp, 12-48V connector lead to positive & negative alligator clamps
- Sturdy aluminium leg supports
- Quality stainless steel latches and hinges
- Controller securely mounted to the panel supports, reducing de-rating
- Protective ABS corners
- Heavy duty swivel carry handle
- Heavy duty storage bag
- Weight (Kg): 11.80



#### Specifications

Power Tolerance	+3%
Maximum Power (Pmax)	200Wp
Maximum Power Voltage (Vmp)	19.6V
Maximum Power Current (Imp)	10.20A
Rated Voltage	12V
Open Circuit Voltage (Voc)	23.2V
Short Circuit Current (Isc)	11.27A
Operating Temperature	-40°C to +85°C
Product Application	Class A
Max System Voltage	1000V DC

#### Warranty

12 Month warranty on complete kit





# **SOLAR PANEL MOUNTING SOLUTIONS**



### **MODEL KT70747**

#### **TWIN SOLAR PANEL MOUNTING 'EZY' RAILS - LARGE**

- Suited to solar panels with a side profile of up to 35mm
- Dimensions (mm): 800 (L) x 50 (W) x 42 (H)
- Robust anodised black aluminium extrusion
- Can be cut to required length
- Multiple pre-drilled mounting holes
- Includes mounting hardware



### **MODEL KT70748**

#### **TWIN SOLAR PANEL MOUNTING 'EZY' RAILS - SMALL**

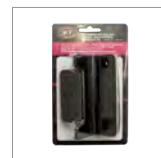
- Suited to solar panels with a side profile of 17-25mm
- Dimensions (mm): 800 (L) x 40 (W) x 32 (H)
- Robust anodised black aluminium extrusion
- Can be cut to required length
- Multiple pre-drilled mounting holes
- Includes mounting hardware



### **MODEL KT70749**

#### **SOLAR PANEL MOUNTING BRACKETS 4 PACK, WITH 8MM T-BOLT HOLE**

- Anodised for enhanced weather & corrosion resistance
- Stylish, modern design, suits 5-150W panels
- Dimensions (mm): 101 (L) 66 (W) x 43 (H)
- 8mm T-Bolt hole for easy mounting to roof-racks
- Wind speed capacity is approximately: 50m/s
- Snow load capacity 3KN/m<sup>2</sup>



### **MODEL KT70753**

#### **UNIVERSAL SOLAR PANEL ROD MOUNTING SYSTEM DESIGNED FOR 5W, 10W & 20W SOLAR PANELS**

- Ideal for solar panels with 17mm side profile
- Ideal for marine applications, including charging of batteries in boats & jet-skis, rural applications on properties with electric fences, security camera battery charging when 240V AC power is unavailable, 12V garden & outdoor lighting, portable solution to charging isolated batteries anywhere
- 2 x fully adjustable, sliding locking clamps that will accommodate a 5W, 10W or 20W solar panel easily.
- 5mm allen key included to easily secure panel to mounting system
- The locking swivel knuckle allows the user to adjust the solar panel angle to achieve maximum sun exposure.
- Fishing rod male gimbal butt which locks into most universal female rod holders
- 12V, 5 Amp PWM solar charge controller included



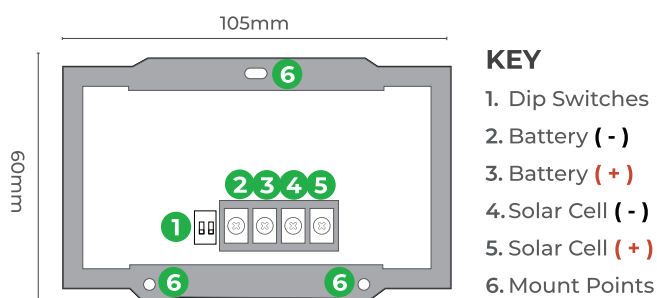


# SOLAR CHARGE CONTROLLERS



## MODEL KT70755 8 AMP, 12V PWM SOLAR CHARGE CONTROLLER

The KT 8 Amp Solar Charge Controller is designed to regulate the amount of charge coming from the panel that flows into the deep cycle battery in order to avoid batteries being overcharged.



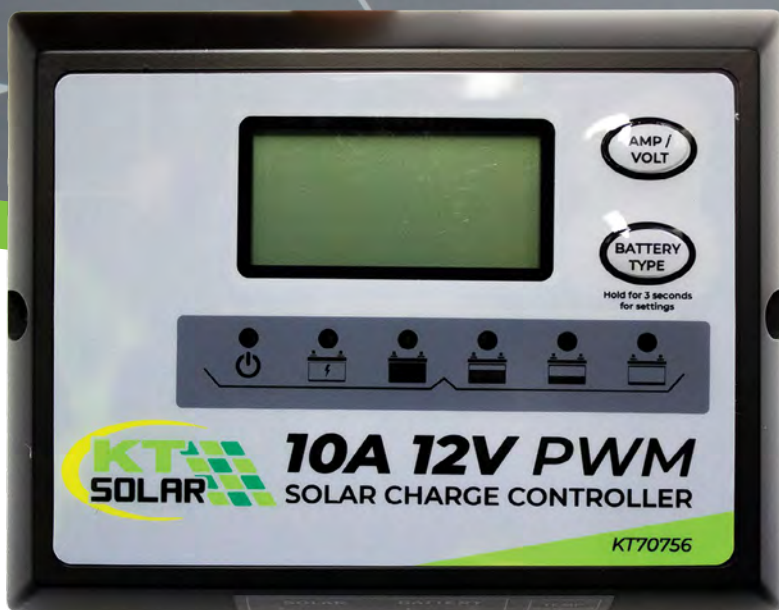
### Features

- Maintenance charger for small sealed lead-acid batteries
- Compatible with battery types: gel, wet, AGM, calcium
- Suitable for use with 12V solar panels up to 135W
- Advanced pulse width modulation technology (PWM)
- Adjustable dip switch for pre-setting battery chemistry
- LED indicators denote charging full / or fault
- Potted for 100% no condensation
- IP65 rated – dustproof & splashproof
- Easy 3 point mounting

### Specifications

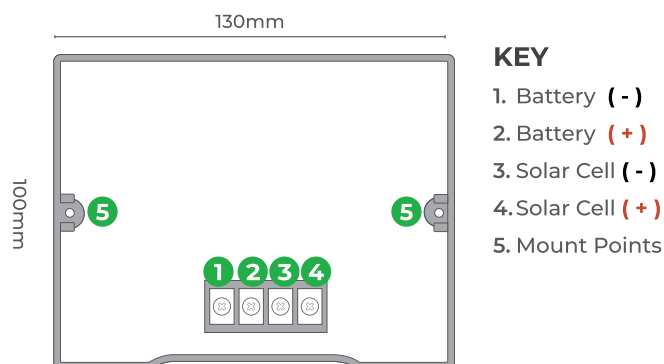
Operating Temperature	-20°C to +80°C
Operating Voltage	12V
Rated to (Amps)	8A
Rated to (Voltage)	12V
Battery Voltage	12V
Dimensions (mm)	60 (H) x 105 (W) x 35 (D)
Product Weight (Kg)	1.20
Manufactured from material	Polycarbonate





## MODEL KT70756 10 AMP, 12V PWM SOLAR CHARGE CONTROLLER

The KT 10 Amp Solar Charge Controller is designed to regulate the amount of charge coming from the panel that flows into the deep cycle battery in order to avoid batteries being overcharged.



### Features

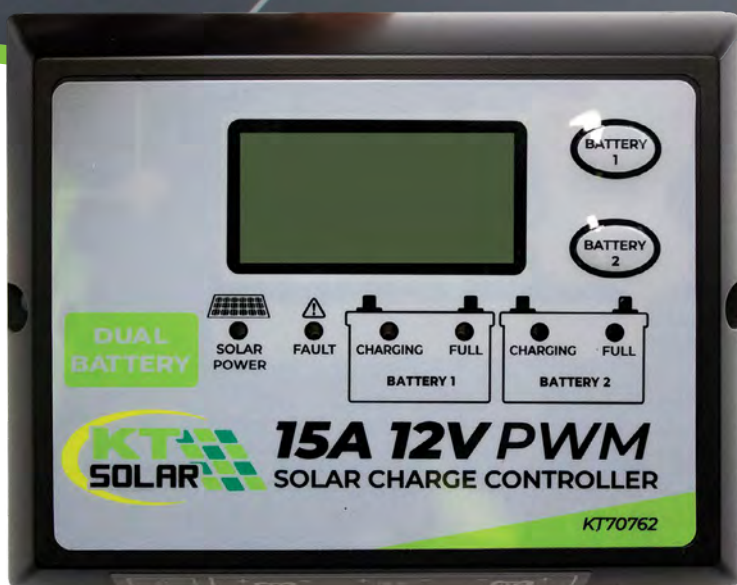
- Maintenance charger for small sealed lead-acid batteries
- Compatible with battery types: Gel, Wet, AGM, Calcium & Lithium
- Suitable for use with 12V solar panels up to 150W
- Advanced pulse width modulation technology (PWM)
- LCD information screen with selection modes for battery chemistry
- LED indicators display battery status
- Potted for 100% no condensation
- IP65 rated – dustproof & splashproof
- Easy 2 point mounting

### Specifications

Operating Temperature	-20°C to +80°C
Operating Voltage	12V
Rated to (Amps)	10A
Rated to (Voltage)	12V
Battery Voltage	12V
Dimensions (mm)	100 (H) x 130 (W) x 28 (D)
Product Weight (Kg)	1.20
Manufactured from material	Polycarbonate

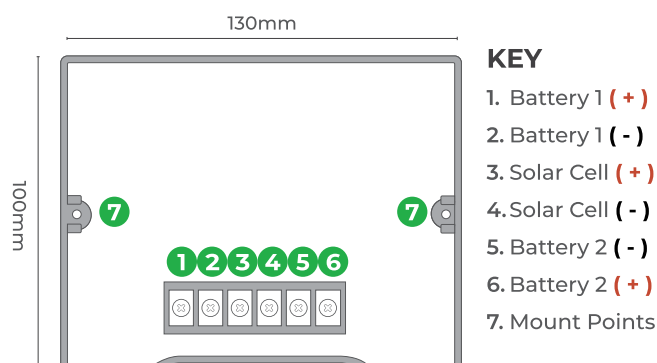


**12** MONTH WARRANTY



## MODEL KT70762 15 AMP, 12V PWM DUAL SOLAR CHARGE CONTROLLER

The KT 15 Amp Dual Solar Controller is designed to charge 2 x 12V Batteries simultaneously. Suited to charge gel, wet, AGM, calcium and lithium battery types, this charge controller prevents batteries from becoming overcharged. The unit provides an automatic equalisation feature for deeply drained conventional lead-acid or calcium batteries.



### Features

- Ideal for charging 2 x lead-acid batteries simultaneously
- Compatible with battery types: gel, wet, AGM, calcium and lithium
- Solar panel max. 200W or 2 x 120W solar panels
- Selection modes for battery 1 and battery 2
- Preset percentage of available charge
- Reverse polarity, short circuit & over voltage protection
- Pulse width modulation technology (PWM)
- LCD Information screen with selection modes for battery chemistry
- LED indicators display battery status
- Potted for 100% no condensation
- IP65 rated – dustproof & splashproof
- Easy 2 point mounting

### Specifications

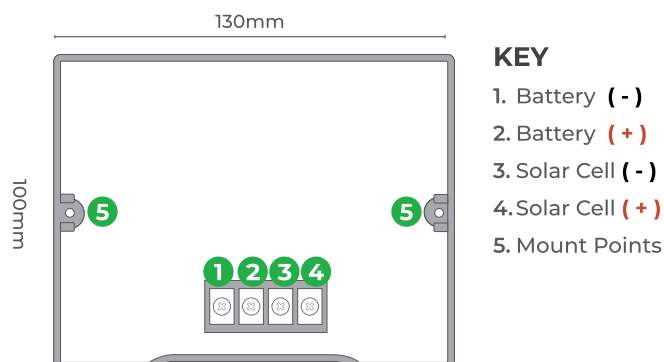
Operating Temperature	-20°C to +80°C
Operating Voltage	12V
Rated to (Amps)	15A
Rated to (Voltage)	12V
Battery Voltage	12V
Dimensions (mm)	100 (H) x 130 (W) x 28 (D)
Product Weight (Kg)	1.20
Manufactured from material	Polycarbonate





## MODEL KT70757 20 AMP, 12V PWM SOLAR CHARGE CONTROLLER

The KT 20 Amp Solar Charge Controller is designed to regulate the amount of charge coming from the panel that flows into the deep cycle battery in order to avoid batteries being overcharged.



### Features

- Maintenance charger for lead-acid batteries
- Compatible with battery types: gel, wet, AGM, calcium & lithium
- Suitable for use with 12V solar panels up to 200W or 2 x 150W panels configured in parallel
- Advanced pulse width modulation technology (PWM)
- LCD Information screen with selection modes for battery chemistry
- LED indicators display battery status
- Potted for 100% no condensation
- IP65 rated – dustproof & splashproof
- Easy 2 point mounting

### Specifications

Operating Temperature	-20°C to +80°C
Operating Voltage	12V
Rated to (Amps)	20A
Rated to (Voltage)	12V
Battery Voltage	12V
Dimensions (mm)	100 (H) x 130 (W) x 28 (D)
Product Weight (Kg)	1.20
Manufactured from material	Polycarbonate



**12** MONTH WARRANTY



## QUAD-CONNECT BATTERY BOX

**Battery Storage and easy access to 12V power through one central unit**

The innovative KT Portable Battery Box is designed for transporting deep cycle batteries with ease, with the benefit of monitoring battery voltage and powering or charging 12V devices from one central unit.

Designed to suit most 100Ah batteries, this KT battery box features high current bolt terminals designed for connecting high-current loads, making it excellent for applications including 4wd, off-road adventures, camping trips, work applications and more.

That is not all - the new and innovative KT Quad-Connect is a molded 12V module which is secured externally to the battery box lid, providing quick and easy connectivity of 50Amp heavy duty connectors. The Quad-Connect is compatible with grey, red, blue and black 50Amp 12V heavy duty connectors and features 4 inputs / outputs.

### Model No. KT71204

Voltage Rating	12V
USB Inputs	1 x 1 Amp & 1 x 2.1 Amp (3.1 Amp Total)
12V Accessory Sockets	2 x 12V marine grade accessory sockets
Switch for Circuit Breaker	Illuminating red rocker switch for 16 Amp circuit breaker - reset / off
LED Voltage Display	12V voltage display
Quad-Connect	1 - 4 ports, each rated at 50 Amps at 12V. Compatible with grey, red, blue & black heavy duty connectors
Fittings	Black screws & fittings included
Material	Tough ABS plastic - fluid & acid resistant
Terminals	Positive / negative for heavy duty conductivity
Battery Size (mm)	324 (W) x 200 (H) x 185 (D)
External Dim. (mm)	420 (W) x 230 (H) x 290 (D)
Internal Dim. (mm)	355 (W) x 205 (H) x 220 (D)
Warranty	12 Months

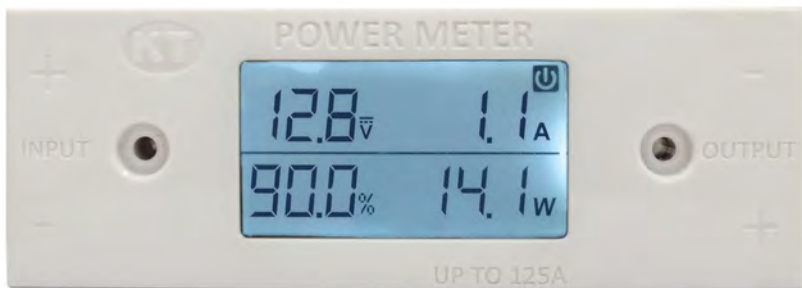


**Complimenting the KT Solar range**

**Contact your nearest AE4A Branch for pricing or more information.**



# INNOVATIVE POWER ACCESSORIES

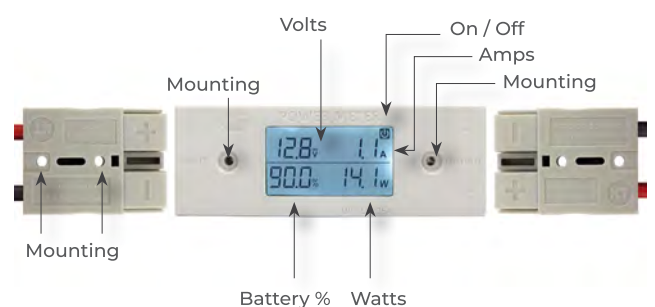


## MODEL KT70752 125A, 100V IN-LINE POWER METER

Design registered, designed and developed by KT, the innovative In-line Power Meter is an easy way to view the Volts, Amps, Watts and battery percentage of your 12V, 24V & 48V devices by a simple touch of the power icon on the LCD. This unit is suitable for use with any 12V, 24V & 48V application and ideal for use in camping & marine environments and to monitor your solar panels.

### Features

- 12V / 24V / 48V
- View Volts, Amps, Watts and Battery Percentage
- Suitable for use with 12V / 24V / 48V devices
- LED touch display
- Display turns off automatically after 30 seconds
- Mounts easily to surfaces with 2 screws
- Unique input and output designed to suit 50 Amp connectors
- One piece, tidy and durable unit
- No messy cables
- Back-lit display provides clear, visible readings day & night
- Housing made of durable polycarbonate
- 'In-line' reading from input to output only



**Notes:** Power source can be battery or solar (source or load)

**12 MONTH WARRANTY**



## MODEL KT70030S

### 50A, 12V HEAVY DUTY CONNECTOR WITH IN-BUILT VOLTMETER

Designed and developed by KT, this connector is unlike standard heavy duty connectors on the market. The device is simple to operate and doubles as a 50Amp Heavy Duty Connector and Voltmeter, providing a live voltage reading of your power connection at the touch of a button. The connector is molded from ultra durable polycarbonate and features a waterproof (IP67) LCD, making it suited to standard, heavy duty and marine environments.

#### Features

- Live voltage reading via smart-touch LCD
- Reading appears with touch & turns off automatically after 30 seconds
- Waterproof LCD
- Voltage: 12V DC at 50 Amps
- Suits cable size: 8B&S (8mm<sup>2</sup>)
- Nickel plated copper pins
- Pack includes one 50A heavy duty voltmeter connector



**Notes:** Additional Standard 50Amp heavy duty connector pictured for illustrative purposes only.



**12 MONTH WARRANTY**



## MODEL KT70601 4 WAY DC POWER LINK, 50 AMP 12V - 24V

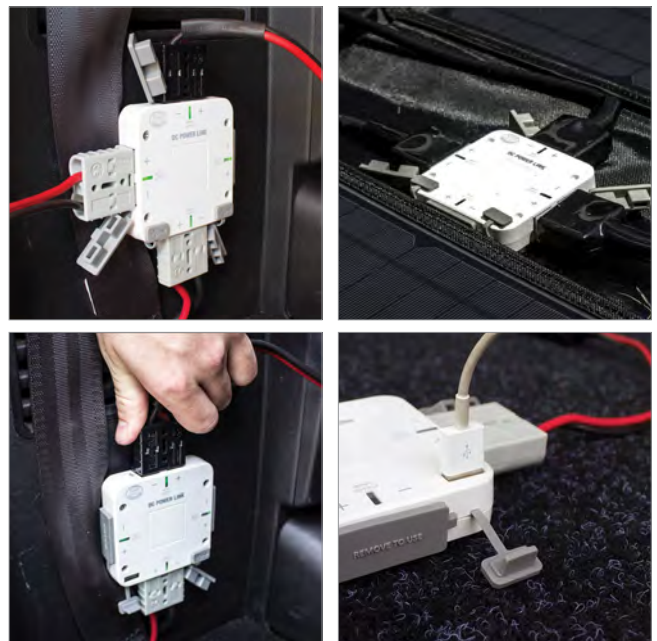
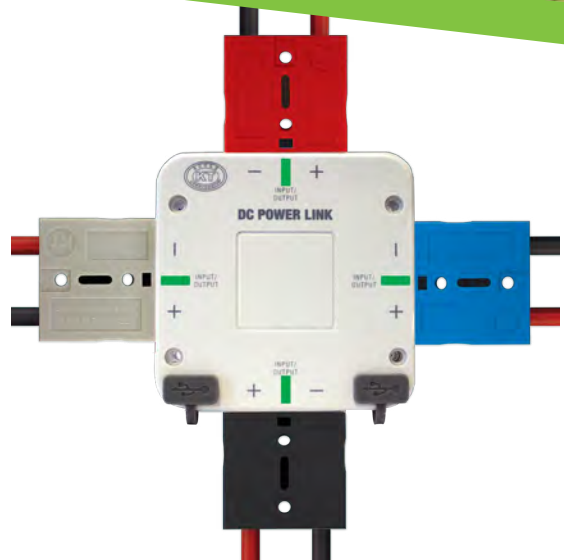
An omni-directional, 50Amp power source suitable for 12V/24V applications. The DC Power Link is a unique product and design within the marketplace, designed to make powering your off-road 4x4 adventures, camping trips, and caravanning trips easier!

### Features

- 4 Input/outputs which can support up to 3 individual inputs from a battery source or 12V solar.
- Suitable for use with any 12V/24V applications including 12V solar, deep cycle batteries, lighting, camping fridges, air compressors, and a variety of other camping, marine, 4wd & caravanning applications
- LED Indicator shows live circuit once input has been connected
- 4 Mounting points (stainless steel hardware incl.)
- Dust proof and splash proof

### Specifications

Rated Voltage	12 - 24V
Dimensions (mm)	86 x 86 x 22
USB output rating (Amps)	2.1A / 1A (3.1A total)



**NOTE:** If using this product to connect multiple solar panels, a solar controller must be placed between the DC power link and the battery.

(Only a single Solar controller should be used, even when connecting multiple solar panels to the DC Power Link).



**12** MONTH WARRANTY



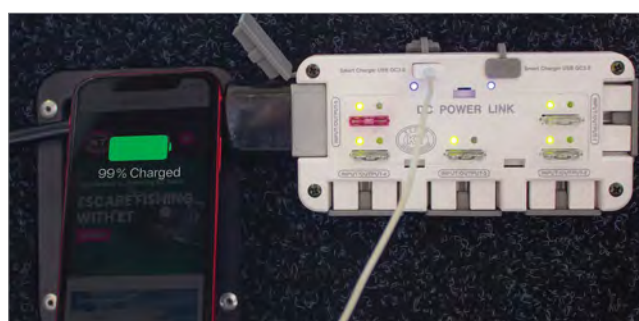
## MODEL KT70602

### 5 WAY DC POWER LINK, 50 AMP 12V - 24V

Designed to simplify 12V/24V connections. The module has 50A input/output options and can utilise power from 12V and 24V batteries or direct input from solar panels. It features dual 5V USB outputs to power devices while the 50A outputs are ideal for use with solar, fridges, air compressors, and a variety of other camping, marine, 4WD, and caravanning applications.

#### Features

- Power up to 6 devices at once
- Suitable for use with 12V & 24V Devices
- Dual QC3.0 USB smart charge outlets (5V each) for efficient charging & powering USB Devices
- LED indicators denote live circuits, active circuits and blown fuses
- All circuits are fuse protected
- Dustproof and splashproof
- Designed to connect with standard 50A connectors
- Features 4 point secure mounting and easy clip on/off clear polycarbonate cover



**NOTE:** If using this product to connect multiple solar panels, a solar controller must be placed between the DC power link and the battery.

(Only a single Solar controller should be used, even when connecting multiple solar panels to the DC Power Link).

#### Specifications

Rated Voltage	12 - 24V
Power Input	50A
Device Inputs	15A each (50A total at any one time)
Dimensions (mm)	143 (L) x 77.2 (H) x 32 (D)



**12** MONTH WARRANTY

# RETAIL MERCHANDISING *Solutions*

The KT DIY Solar Merchandiser is designed to simplify the concept of solar and take the complication out of setting up DIY recreational solar systems.

Generally when customers are starting out with solar, they struggle most with discerning which products are needed for their chosen purpose and where they should be placed within the solar system. The KT Solar Merchandiser eliminates any guess work, intuitively guiding the customer through DIY solar set up with a simple 3 step process.

1. Select your solar panel to suit your applications, battery & loads
2. Select your solar controller to suit your solar panel & battery
3. Select leads & accessories required to connect your system together

The retail signage displays all key components required to build a fully operational solar system, and clearly guides the user as to where these components fit within the system.

Assist your customers to easily navigate the solar landscape and select the products best suited to their requirements, whilst providing valuable information that can increase your customer's confidence in their knowledge of solar.

KT Solar's informative display is easy to build with basic instructions and is suitable for ranging 12V solar panels from 5 Watts up to 200 Watts, along with all power accessories including solar charge controllers, leads & connectors and various mounting solutions – all fitting within a single bay.

Further educational information, diagrams & FAQ's about solar systems and the KT Solar range are easily accessible via scanning the QR codes featured on the display. With portable solar solutions also included, this is a one-stop-shop for DIY recreational Solar.



**Contact your Area Business Development  
Manager for additional information on  
solar merchandising solutions.**



# SOLAR LEADS & CONNECTORS



### **MODEL KT70770** **SOLAR PANEL 'Y' LEAD CONNECTOR, 2 SOCKETS TO 1 PLUG**

- Designed to connect the output of two solar panels into a parallel circuit or multiple panels in an array
- MC4 connectors rated to 12-48V (TUV certified)
- MC4 connector contacts: tin plated copper
- IP Rating: IP67 (Waterproof)
- UV Resistant
- Length: 300mm
- Operating temp: -40°C to +90°C



### **MODEL KT70771** **SOLAR MC4 Y-LEAD CONNECTOR 2 PLUGS TO 1 SOCKET**

- Designed to connect the output of two solar panels into a parallel circuit or multiple panels in an array
- MC4 connectors rated to 12-48V (TUV certified)
- MC4 connector contacts: tin plated copper
- IP Rating: IP67 (Waterproof)
- UV Resistant
- Length: 300mm
- Operating temp: -40°C to +90°C



### **MODEL KT70772** **SOLAR MC4 CONNECTOR, FEMALE**

- Designed for solar cable connections
- Connector rated to 12-48V (TUV certified)
- Connector contacts: tin plated copper
- IP Rating: IP67 (Waterproof)
- UV Resistant
- Operating temp: -40°C to +90°C



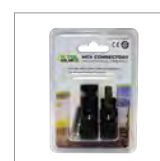
### **MODEL KT70773** **SOLAR MC4 CONNECTOR, MALE**

- Designed for solar cable connections
- Connector rated to 12-48V (TUV certified)
- Connector contacts: tin plated copper
- IP Rating: IP67 (Waterproof)
- UV Resistant
- Operating temp: -40°C to +90°C



### **MODEL KT70774** **SOLAR MC4 CONNECTOR, MALE & FEMALE TWIN PACK**

- Pack Contents: 1 x female & 1 male connector
- Designed for solar cable connections
- MC4 connectors rated to 12-48V (TUV certified)
- MC4 connector contacts: tin plated copper
- IP rating: IP67 (Waterproof)
- UV resistant
- Operating temp: -40°C to +90°C





### **MODEL KT70565** **50 AMP, 12-48V CONNECTOR TO** **TWIN 50 AMP 12-48V CONNECTORS**

- Ideal for automotive, marine, solar & outdoor applications
- Connector rating: 50A, 12V-48V
- Connector housing: Polycarbonate
- Cable protection: UV treated, flame-retardant corrugated loom with heavy duty nylon gland end pieces
- Cable length: 600mm
- Cable type: 6mm<sup>2</sup>



### **MODEL KT70566** **50 AMP, 12-48V CONNECTOR TO** **MALE & FEMALE MC4 CONNECTORS**

- Ideal for automotive, marine, solar & outdoor applications
- Heavy duty connector rating: 50A, 12V-48V
- MC4 connectors rated to 2.20A, 12-48V (TUV certified)
- MC4 connector contacts: tin plated copper
- Heavy duty connector housing: polycarbonate
- Cable protection: UV treated, flame-retardant corrugated loom with heavy duty nylon gland end pieces
- Cable length: 600mm
- Cable type: 6mm<sup>2</sup>



### **MODEL KT70567** **5M EXTENSION LEAD, 50 AMP, 12-48V CONNECTOR** **EXTENSION LEAD TO MALE & FEMALE MC4 CONNECTORS**

- Ideal for automotive, marine, solar & outdoor applications
- Heavy duty connector rating: 50A, 12V-48V
- MC4 connectors rated to 12-48V (TUV certified)
- MC4 connector contacts: tin plated copper
- Heavy duty connector housing: polycarbonate
- Cable protection: UV treated, flame-retardant corrugated loom with heavy duty nylon gland end pieces
- Cable length: 5M
- Cable type: 6mm<sup>2</sup> twin core automotive cable (8AWG)



### **MODEL KT70568** **600MM SOLAR LEAD, MALE & FEMALE MC4 CONNECTORS** **TO 8MM RING TERMINALS**

- Ideal for automotive, marine, solar & outdoor applications
- MC4 connectors rated to 12-48V (TUV certified)
- MC4 connector contacts: tin plated copper
- 2 x 8mm ring terminals for easy connection to battery
- Cable protection: UV treated, flame-retardant corrugated loom with heavy duty nylon gland end pieces
- Cable length: 600mm
- Cable type: 6mm<sup>2</sup>





**MODEL KT70571**  
**1M EXTENSION LEAD, 50 AMP, 12V - 48V CONNECTOR**  
**TO 50 AMP, 12V - 48V CONNECTOR**

---

- Ideal for automotive, marine, solar & outdoor applications
- Connector Rating: 50A, 12V-48V
- Connector Housing: Polycarbonate
- Cable Protection: UV treated, flame-retardant corrugated loom with heavy duty nylon gland end pieces
- Cable length: 1M
- Cable type: 6mm<sup>2</sup>



**MODEL KT70572**  
**3M EXTENSION LEAD, 50 AMP, 12V - 48V CONNECTOR**  
**TO 50 AMP, 12V - 48V CONNECTOR**

---

- Ideal for automotive, marine, solar & outdoor applications
- Connector Rating: 50A, 12V-48V
- Connector Housing: Polycarbonate
- Cable Protection: UV treated, flame-retardant corrugated loom with heavy duty nylon gland end pieces
- Cable Length: 3M
- Cable Type: 8mm<sup>2</sup>





# HANDY SOLAR Facts

01



It is important to understand that solar energy charges your battery - not your appliances directly.

Your appliances (also referred to as 'loads') are powered by your battery - which is charged by Solar Energy.

02



The purpose of a solar charge controller is to regulate the power being fed from the solar panel into the battery. Regulating the power will prevent the damage to your battery that occurs from being over charged or under charged.

03



The foundation of a fruitful solar system is a good quality battery.

As a general rule, we recommend selecting a 12V, 100Ah (or higher) deep cycle battery for a recreational solar system.

04



The solar charge controller should be installed between the solar panel and battery.

It is recommended to have your solar charge controller as close to your battery as possible. Doing so reduces voltage drop and ensures optimal operation and longevity of your Solar Charge Controller.

05



Charging your battery with solar whilst in use prevents batteries from discharging too low - causing damage to your battery.

The recommended discharge is up to 30%. Discharging to 50% regularly can significantly reduce the number of cycles in your deep cycle battery. Meaning early replacement.

06



Solar Panels can produce up to their max power voltage (Pmax). eg; The KT Solar 100W, 12V panel can produce 18.3V max. This is too much 'live' power to direct into a battery & can be dangerous when used unregulated. If your battery is 100% charged, this could over-charge your battery (causing damage).

**CLICK HERE TO VIEW THE  
COMPLETE GUIDE TO SETTING UP  
YOUR SOLAR SYSTEM**



### **MODEL KT70554** **50AMP, 12-36V CONNECTOR WITH IN-BUILT VOLTMETER** **TO 8MM RING TERMINALS (300MM)**

- Ideal for automotive, marine, solar & outdoor applications
- Suitable for connection to a battery
- Voltmeter provides live voltage reading via smart-touch LCD
- Waterproof LCD
- Voltmeter connector rating: 50A, 12-36V
- Voltmeter connector housing: polycarbonate
- Voltmeter connector terminals: silver plated copper
- Ring terminals: 8mm
- Cable length: 300mm
- Cable type: 8mm<sup>2</sup> battery cable



### **MODEL KT70553** **50AMP, 12-36V CONNECTOR TO 8MM RING TERMINALS (300MM)**

- Ideal for automotive, marine, solar & outdoor applications
- Suitable for connection to a battery
- Connector Rating: 50A, 12V
- Connector housing: polycarbonate
- Connector terminals: silver plated copper
- Ring terminals: 8mm
- Cable length: 300mm
- Cable type: 8mm<sup>2</sup> battery cable



### **MODEL KT70556** **50AMP, 12-36V CONNECTOR WITH IN-BUILT VOLTMETER** **TO 15A ACCESSORY SOCKET (300MM)**

- Ideal for automotive, marine, solar & outdoor applications
- 15A accessory socket
- Voltmeter provides live voltage reading via smart-touch LCD
- Waterproof LCD
- Voltmeter connector rating: 50A, 12-36V
- Voltmeter connector housing: polycarbonate
- Voltmeter connector terminals: silver plated copper
- Cable length: 300mm
- Cable type: 8mm<sup>2</sup> battery cable



### **MODEL KT70555** **50AMP, 12-36V CONNECTOR TO 15A ACCESSORY SOCKET (300MM)**

- Ideal for automotive, marine, solar & outdoor applications
- 15A accessory socket
- Connector rating: 50A, 12-36V
- Connector housing: polycarbonate
- Connector terminals: silver plated copper
- Cable length: 300mm
- Cable type: 8mm<sup>2</sup> battery cable





### **MODEL KT70559** **50AMP, 12-36V CONNECTOR WITH IN-BUILT VOLTMETER** **TO 15A ACCESSORY PLUG (300MM)**

- Ideal for automotive, marine, solar & outdoor applications
- 15A accessory plug
- Voltmeter provides live voltage reading via smart-touch LCD
- Waterproof LCD
- Voltmeter connector rating: 50A, 12-36V
- Voltmeter connector housing: polycarbonate
- Voltmeter connector terminals: silver plated copper
- Cable length: 300mm
- Cable type: 8mm<sup>2</sup> battery cable



### **MODEL KT70558** **50AMP, 12-36V CONNECTOR TO 15A ACCESSORY PLUG (300MM)**

- Ideal for automotive, marine, solar & outdoor applications
- 15A accessory plug
- Connector rating: 50A, 12V
- Connector housing: polycarbonate
- Connector terminals: silver plated copper
- Cable length: 300mm
- Cable type: 5mm<sup>2</sup> battery cable



### **MODEL KT70562** **50AMP, 12-36V CONNECTOR WITH IN-BUILT VOLTMETER** **TO 200A INSULATED BATTERY CLAMPS (300MM)**

- Ideal for automotive, marine, solar & outdoor applications
- 200A insulated battery clamps
- Designed for connection of solar panels, portable fridges, compressors or inverters to a battery
- Voltmeter provides live voltage reading via smart-touch LCD
- Waterproof LCD
- Voltmeter connector rating: 50A, 12-36V
- Voltmeter connector housing: polycarbonate
- Voltmeter connector terminals: silver plated copper
- Cable length: 300mm
- Cable type: 8mm<sup>2</sup> battery cable



### **MODEL KT70561** **50AMP, 12-36V CONNECTOR TO 200A INSULATED** **BATTERY CLAMPS (300MM)**

- Ideal for automotive, marine, solar & outdoor applications
- 200A insulated battery clamps
- Designed for connection of solar panels, portable fridges, compressors or inverters to a battery
- Connector rating: 50A, 12V
- Connector housing: polycarbonate
- Connector terminals: silver plated copper
- Cable length: 300mm
- Cable type: 8mm<sup>2</sup> battery cable





### **MODEL KT70573** **50AMP HEAVY DUTY CONNECTOR TO FORK TERMINALS**

- Provides power connection 'to and from' solar charge controller
- Ideal for automotive, marine, solar & outdoor applications
- Suitable for use with all KT solar charge controllers
- Connector Rating: 50A, 12V-48V
- Connector Housing: Polycarbonate
- Terminals: Silver plated copper
- Fuse: 20A In-line
- Cable length: 300mm
- Cable type: 5mm<sup>2</sup>



### **MODEL KT70552** **5M EXTENSION LEAD, 50AMP, 12V CONNECTOR WITH IN-BUILT VOLTMETER TO STANDARD 50AMP, 12-36V CONNECTOR**

- Ideal for automotive, caravan, 4wd or industrial connections requiring a 50A to 15A, 12V power supply
- Voltmeter provides live voltage reading via smart-touch LCD
- Waterproof LCD
- Connector rating: 50A, 12-36V
- Connector housing: polycarbonate
- Connector terminals: silver plated copper
- Cable length: 5M
- Cable type: 8mm<sup>2</sup> twin sheath cable
- Weight (Kg): 1.5



### **MODEL KT70551** **5M EXTENSION LEAD, 50AMP, 12-48V CONNECTOR TO 50AMP, 12-48V CONNECTOR**

- Ideal for automotive, caravan, 4wd or industrial connections requiring a 50A to 15A, 12V power supply
- Connector rating: 50A, 12V-48V
- Connector housing: polycarbonate
- Connector terminals: silver plated copper
- Cable length: 5M
- Cable type: 8mm<sup>2</sup> twin sheath cable
- Weight (Kg): 1.5



### **MODEL KT70550** **10M EXTENSION LEAD, 50AMP, 12V CONNECTOR WITH IN-BUILT VOLTMETER TO STANDARD 50AMP, 12-36V CONNECTOR**

- Ideal for automotive, caravan, 4wd or industrial connections requiring a 50A to 15A, 12V power supply
- Voltmeter provides live voltage reading via smart-touch LCD
- Waterproof LCD
- Connector rating: 50A, 12-36V
- Connector housing: polycarbonate
- Connector terminals: silver plated copper
- Cable length: 10M
- Cable type: 8mm<sup>2</sup> twin sheath cable
- Weight (Kg): 3.0



# DCC Pro In-Vehicle DC-DC Battery Charger

The DCC Pro in-vehicle DC-DC Battery Charger was developed to charge and maintain any auxiliary battery in a set up where the starting battery is used as the supply source. It is ideal for use in 4wds, RVs, buses, coaches, caravans, campers or any vehicle with a 12V DC electrical system. The DCC Pro is built to withstand tough Australian conditions and maintains output in the harshest of environments under the highest ambient temperatures.

The DCC Pro is solar ready - there is no need for an additional regulator or relay. The unit is built complete with an integrated MPPT solar charge controller capable of handling power with up to 30% greater efficiency than a standard PWM regulator.



*Complimenting the  
KT Solar range*

*Lithium  
Ready*

## Specifications

Model No.	VOL - DCC1225ACKRP		
Input Voltage	Main: 9 – 16 VDC		
	Solar: 18-28 VOC (Open circuit voltage - no load)		
Solar Power	Unrestricted (system limited to 25 Amps)		
Continuous Rating	25 Amps @ 50°C (de-rate from 50°C to 80°C)		
Current Draw	Charging Device: In stand by:		
	Including LED Indicator <10mA		
	At full load: Up to 35 Amps		
	Remote Display: with backlight off 10mA max With backlight on: 45mA max		
Output Voltage	Boost/CC:	Absorption/CV	Float/CV
	14.5VDC	14.4VDC	13.4VDC
	14.7VDC	14.6VDC	13.6VDC
	14.3VDC	14.2VDC	13.5VDC
	14.9VDC	14.8VDC	13.8VDC
	14.6VDC		14.4VDC
Electrical Protection	Over temperature disconnect - auto reconnect		
	Under voltage shutdown - auto restart		
	High voltage disconnect - auto reconnect		
	Reverse polarity protection on all terminals		
Environmental Protection	Charging device: IP67 (internal components only)		
	Remote display: IP40 (not dust or water resistant)		
Operating Temp	+20°C to +85°C		
Operating Humidity	Up to 100% (non-condensing)		
Charging Device Materials	Heatsink: E-coated ADC-3 die cast aluminium		
	Blue plastics: temperature resistant PC/ABS alloy		
	Black plastics: 15% glass reinforced PBT		
	Transparent plastics: temperature resistant PMMA		
Remote Display Materials	Dark grey plastics: temp resistant PC/ABS alloy Transparent plastics: Temp resistant PMMA		
Terminal Material	Tin plated brass, 304SS fasteners		
Conformity	AS/NZS CISPR 11:2004 for EMC		
Dimensions	Charging device: 112 x 112 x 75mm (inc. terminal cover)		
	Remote display: 60 x 36 x 59mm (inc. mounting bracket)		
Weight	Charging device: 690 grams		
	Remote display: 55 grams		

## An innovative battery charging solution, compatible with KT Solar

The DCC Pro is a standalone power conversion device. It will also manage a variety of different battery types according to their specific charging requirements. As no modification to the vehicles original wiring is required, this ensures the manufacturers electrical system is not compromised in any way. The DCC Pro is a highly innovative product with many unique features. It has the flexibility to adapt to almost any vehicle, old or new, simple or complex with or without an ECU controlled electrical system and even allows the operator to monitor the charging status from the comfort of the cabin.



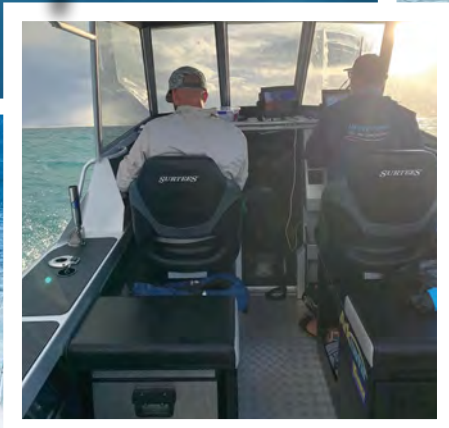
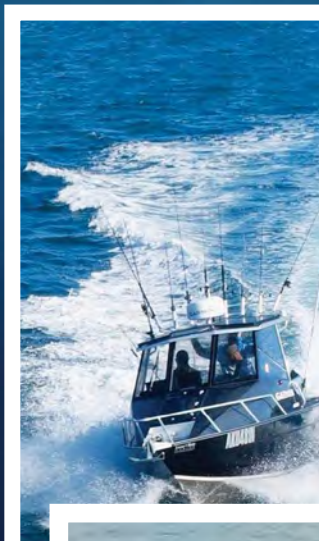
**Contact your nearest AE4A branch for pricing or more information.**



Featured on

# Escape With

# ET



It's always an adventure when Andrew 'ET' Ettingshausen is concerned!... travelling to some of the most exotic locations in Australia and the Pacific in his brand new Surtees 650 Game Fisher.

Equipped with the most innovative offroad and offshore equipment from highly reputable brands, such as KT Cables, KT Solar, National Luna, Century & Garmin (amongst others), ET has peace of mind knowing wherever he is cruising, he will always have reliable, fully charged batteries and a fridge freezer to keep all food and drink ice cold.

ET's Surtees 65 Game Fisher is fitted out with 2 x KT Solar 120 Watt 12V monocrystalline solar panels installed to the roof, a National Luna 72L Legacy stainless steel fridge freezer, KT Cables daytime running lights for illuminating the deck, a KT solar charge controller fitted inside the cabin and a National Luna blue auxiliary battery box for simple, accessible connection of all 12V accessories.

You can see all of these products in action by tuning in to Escape with ET.

Now in it's 22nd year, Escape with ET is the longest running and most popular fishing show in Australia - by a long cast.

In Season 22, you can expect to see former Rugby League Legend Andrew "ET" Ettingshausen travel Australia and the Pacific, hunting out all types of marine species and showing you all the important tackle, tactics and techniques needed to catch them. By the end of each show you will have all the know how to catch your own trophy fish!

**Escape Fishing With ET** airs on **10 Bold** each **Saturday** at **5pm**.

**Catch the encore's on Network Ten** on **Saturday's @ 7am** and **Sunday's @ 10.30am** on **10 Bold**.

  **@Escapewithet**  
**@ktsolaraus**



# HEAVY DUTY CONNECTORS



### **MODEL KTHDC50S** **50A, 12V - 48V HEAVY DUTY CONNECTOR** **GREY, SINGLE PACK**

- Amp rating: 50A
- Voltage rating: 12-48V
- Suits 8B&S cable (8mm)
- Includes silver plated copper terminals
- Manufactured from impact-resistant polycarbonate
- Connects with grey & black 50A heavy duty connectors



### **MODEL KTHDC502S** **50A, 12V - 48V HEAVY DUTY CONNECTOR** **GREY, TWIN PACK**

- Amp rating: 50A
- Voltage rating: 12V
- Suits cable size 8B&S (8mm)
- Silver plated copper terminals
- Manufactured from impact-resistant polycarbonate
- Connects with grey & black 50A heavy duty connectors



### **MODEL KTHDC50-10S** **50A, 12V - 48V HEAVY DUTY CONNECTOR** **GREY, 10 PACK**

- Amp rating: 50A
- Voltage rating: 12V
- Suits cable size 8B&S (8mm)
- Silver plated copper terminals
- Manufactured from impact-resistant polycarbonate
- Connects with grey & black 50A heavy duty connectors



### **MODEL KT70040S** **50A HEAVY DUTY CONNECTOR WITH RUBBER COVER**

- Amp rating: 50A
- Voltage rating: 12-48V
- Suits 8B&S cable (8mm)
- Includes silver plated copper terminals
- Manufactured from impact-resistant polycarbonate
- Connects with grey & black 50A heavy duty connectors



### **MODEL KTHDC50BE** **50A, 12V - 48V HEAVY DUTY CONNECTOR** **BLUE, SINGLE PACK**

- Amp rating: 50A
- Voltage rating: 12-48V
- Suits 8B&S cable (8mm)
- Includes silver plated copper terminals
- Manufactured from impact-resistant polycarbonate
- Connects with blue 50A heavy duty connectors





### **MODEL KTHDC50RD** **50A, 12V - 48V HEAVY DUTY CONNECTOR** **RED, SINGLE PACK**

- Amp rating: 50A
- Voltage rating: 12-48V
- Suits 8B&S cable (8mm)
- Includes silver plated copper terminals
- Manufactured from impact-resistant polycarbonate
- Connects with red 50A heavy duty connectors



### **MODEL KTHDC50BK** **50A, 12V - 48V HEAVY DUTY CONNECTOR** **BLACK, SINGLE PACK**

- Amp rating: 50A
- Voltage rating: 12-48V
- Suits 8B&S cable (8mm)
- Includes silver plated copper terminals
- Manufactured from impact-resistant polycarbonate
- Connects with black & grey 50A heavy duty connectors



### **MODEL KTHDC175** **175 AMP, 12V - 48V HEAVY DUTY CONNECTOR** **GREY, SINGLE PACK**

- Amp rating: 175 Amps
- Voltage rating: 12-48V
- Suits 2B&S cable
- Includes nickel coated copper terminals
- Manufactured from impact-resistant polycarbonate



### **MODEL KTHDC50C** **BLACK RUBBER COVER TO SUIT 50A 12V - 48V HEAVY** **DUTY CONNECTOR**

- Suits 50A, 12V heavy duty connectors
- Designed to protect internal pins when not in use
- Prevents dirt & dust from entering connection
- UV-resistant rubber with securing loop





### **MODEL KTHDC50C-R RED RUBBER COVER TO SUIT 50A 12V - 48V HEAVY DUTY CONNECTOR**

- Suits 50A, 12V Heavy Duty Connectors
- Designed to protect internal pins when not in use
- Prevents dirt & dust from entering connection
- UV-resistant rubber with searing loop



### **MODEL KTHDC50H HANDLE TO SUIT 50A 12V - 48V HEAVY DUTY CONNECTOR**

- Grey T-handle to suit 50a heavy duty connectors
- Allows easy disconnection of connectors
- Includes nuts and bolts for securing handle

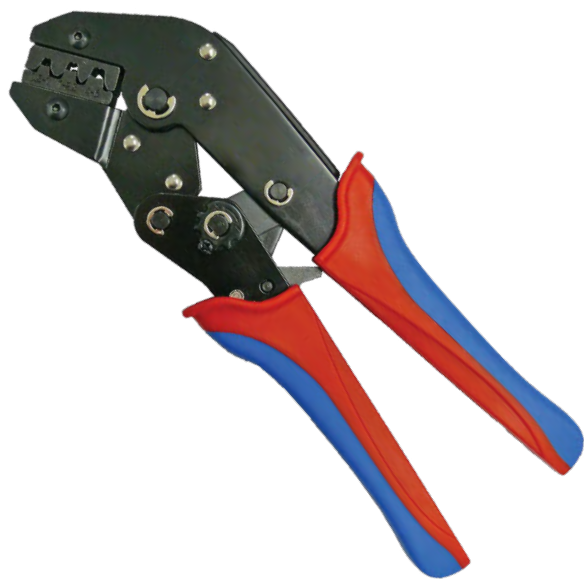
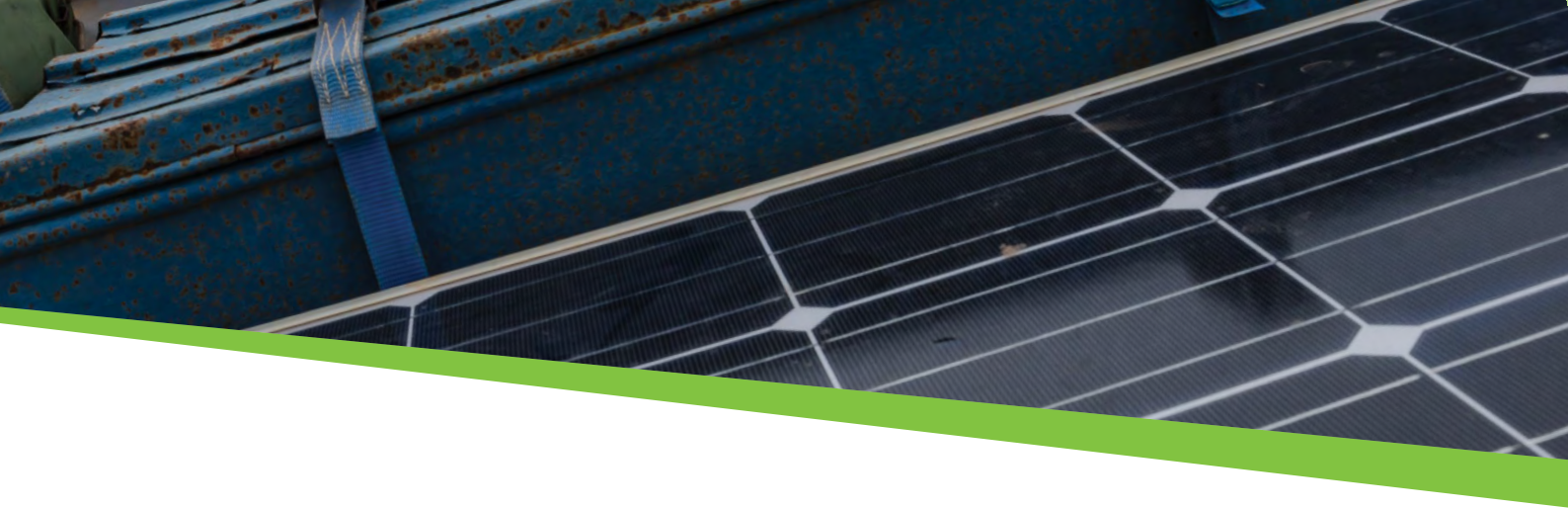


### **MODEL KTHDC50T TERMINAL TO SUIT 50A 12V - 48V HEAVY DUTY CONNECTOR, SINGLE**

- Suits 50A 12V heavy duty connectors
- Silver plated copper



# **SOLAR TOOLS**



## **MODEL KT32052 NON INSULATED RECEPTICAL CRIMPER**

---

KT Heavy Duty Non-Insulated Receptical Crimpers feature chemically blackened finish for improved corrosion resistance. Suitable for crimping cable 0.5 – 0.6mm<sup>2</sup>

### **Features**

- Capable of crimping MC4 connectors
- Crimp range: 20-10AWG (0.5-0.6mm<sup>2</sup>)
- Comfortable rubber grip handles
- Length: 230mm
- Weight (Kg): 0.6



## **MODEL KT32059 NON-INSULATED TERMINAL CRIMPER**

---

KT heavy duty non-insulated terminal crimpers feature chemically blackened finish for improved corrosion resistance. Suitable for crimping cable 14-5AWG (2.5-16mm<sup>2</sup>).

### **Features**

- Makes crimping of non-insulated terminals simple
- Crimp range: 14-5AWG (2.5-16mm<sup>2</sup>)
- Comfortable rubber grip handles
- Length: 230mm
- Weight (Kg): 0.6



# D.I.Y 12V SOLAR Solutions

## STEP 1. SELECT SOLAR PANEL

FIG. NO.	MODEL NO.	SOLAR PANEL	WATTS / VOLTAGE	DIMENSIONS (mm)	APPLICATIONS	SUITS SOLAR CONTROLLER
1	KT70715		10W 12V	Length: 355mm Width: 225mm Depth: 17mm	Maintenance charging of 12V small sealed-lead acid batteries	Safe to use unregulated (without solar controller)
2	KT70716		20W 12V	Length: 483mm Width: 343mm Depth: 17mm	Maintenance charging of 12V small sealed-lead acid batteries	8 AMP
3	KT70717		40W 12V	Length: 420mm Width: 670mm Depth: 25mm	Maintenance charging of 12V small sealed-lead acid batteries	8 AMP
4	KT70728		120W 12V	Length: 945mm Width: 670mm Depth: 35mm	Maintenance charging of 12V sealed-lead acid batteries	8 AMP or 10 AMP
5	KT70729		200W 12V	Length: 1476mm Width: 670mm Depth: 35mm	Maintenance charging of 12V sealed-lead acid batteries	20 AMP

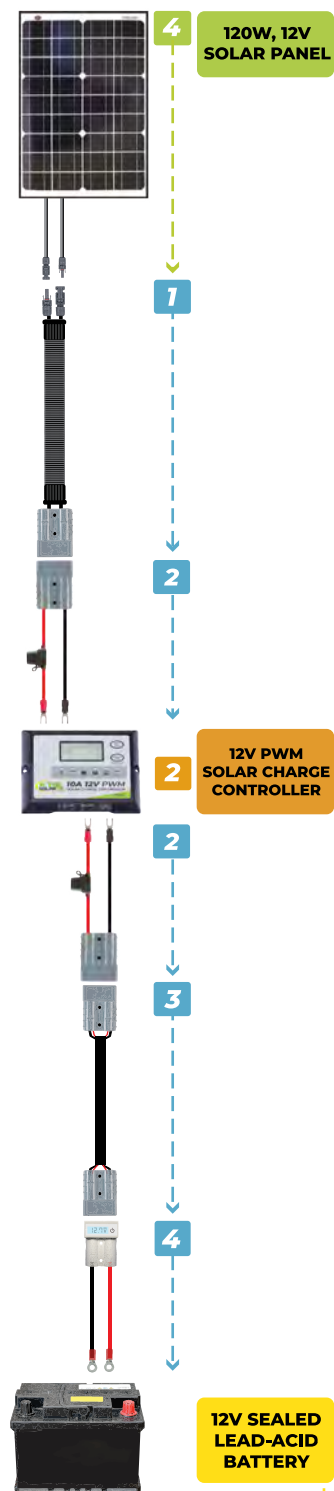
## STEP 2. SELECT SOLAR CONTROLLER

FIG. NO.	MODEL NO.	SOLAR CONTROLLER	AMPS / VOLTAGE	BATTERY COMPATIBILITY	SUITS SOLAR PANEL CAPACITY
1	KT70755		8A / 12V	CHARGES SINGLE BATTERY GEL, WET, AGM, CALCIUM <i>*NOT COMPATIBLE WITH LITHIUM</i>	Suits Single Cell 12V Solar Panels up to 120W
2	KT70756		10A / 12V	CHARGES SINGLE BATTERY GEL, WET, AGM, CALCIUM & LITHIUM	Suits Single Cell 12V Solar Panels up to 150W
3	KT70757		20A / 12V	CHARGES SINGLE BATTERY GEL, WET, AGM, CALCIUM & LITHIUM	Single Cell 12V Solar Panel Maximum 200W or 2 x 150W Panels in Parallel
4	KT70762		15A / 12V DUAL	CHARGES 2 BATTERIES GEL, WET, AGM, CALCIUM & LITHIUM	Single Cell 12V Solar Panel Maximum 200W or 2 x 120W Panels in Parallel

## STEP 3. SELECT POWER ACCESSORIES

FIG. NO.	MODEL NO.	POWER ACCESSORY / LEAD TYPE	LEAD LENGTH (mm)	QTY REQUIRED
1	KT70566		600mm	1 Required Determine Length Required
	KT70567		5M	
2	KT70573		300mm	2 Required For Single Battery Systems 3 Required For 2 Battery Systems Use with Dual Charging Solar Controller
3	KT70571		1M	1 Required For Single Battery Systems 2 Required For 2 Battery Systems Determine Length Required
	KT70572		3M	
4	KT70554		300mm	1 Required For Single Battery Systems 2 Required For 2 Battery Systems

## GUIDE TO SETTING UP YOUR SOLAR SYSTEM



How to guide

CLICK HERE TO VIEW A HANDY SET-UP GUIDE FOR A SOLAR SYSTEM SUITED TO A SINGLE 12V BATTERY OR 2 X 12V BATTERIES, PLUS MORE SOLAR TIPS



# PART NUMBER INDEX



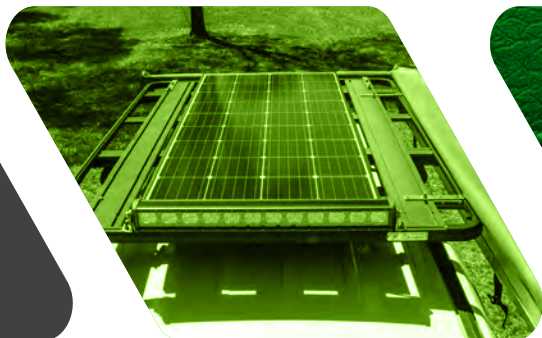
## PART NUMBER INDEX

KT32052	50	KT70566	37
KT32059	51	KT70567	37
KT70030S	31	KT70568	37
KT70040S	46	KT70571	38
KT70550	42	KT70572	38
KT70551	42	KT70573	42
KT70552	42	KT70601	32
KT70553	40	KT70602	33
KT70554	40	KT70710	19
KT70555	40	KT70713	16
KT70556	40	KT70714	6
KT70558	41	KT70715	6
KT70559	41	KT70716	7
KT70561	41	KT70717	7
KT70562	41	KT70721	13
KT70565	37	KT70723	17



KT70727	18
KT70728	8
KT70729	8
KT70731	20
KT70747	22
KT70748	22
KT70749	22
KT70752	30
KT70753	22
KT70755	24
KT70756	25
KT70757	27
KT70770	36
KT70771	36
KT70772	36

KT70773	36
KT70774	36
KT70777	12
KTHDC175	47
KTHDC50-10S	46
KTHDC502S	46
KTHDC50BE	46
KTHDC50BK	47
KTHDC50C	47
KTHDC50C-R	48
KTHDC50H	48
KTHDC50RD	47
KTHDC50S	46
KTHDC50T	48



### Contact Us

East Coast (Head Office)  
Phone: (07) 5540 7877  
Fax (07) 5540 7977  
Email: [sales.ec@ae4a.com.au](mailto:sales.ec@ae4a.com.au)

West Coast Office  
Phone: (08) 9358 7000  
Fax (08) 9458 6001  
Email: [sales.wc@ae4a.com.au](mailto:sales.wc@ae4a.com.au)

Powered by Automotive Electrical & 4WD Accessories  
For more information visit [www.ae4a.com.au](http://www.ae4a.com.au)

**KT SOLAR AUTHORISED FITMENT CENTRES**

[www.ktcables.com.au/solar-fitment-centres](http://www.ktcables.com.au/solar-fitment-centres)